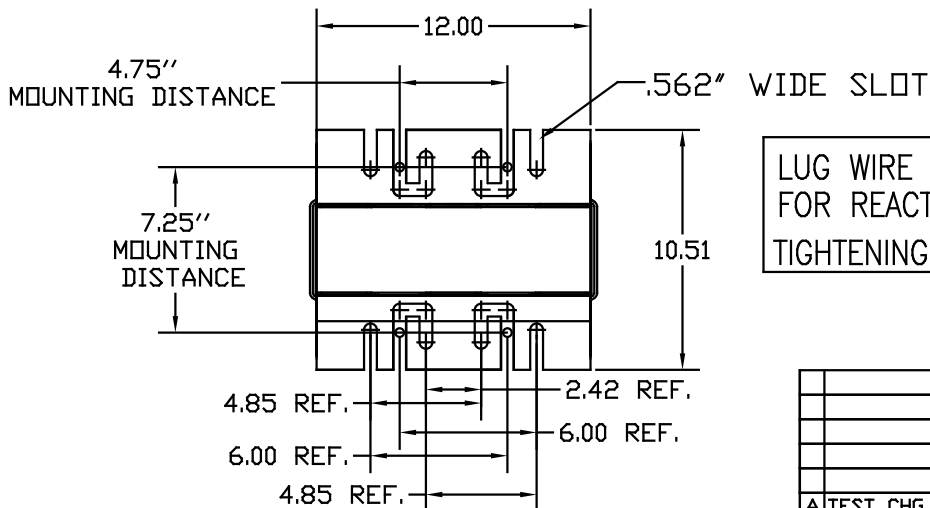
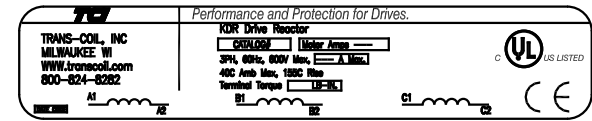


CATALOG NO	VOLTAGE	NEC MOTOR HP	NEC MOTOR CURRENT	WATTS LOSS	APPROX WT-LBS
KDR41L	575	800	768	685	195

NOTE: NEC MOTOR CURRENT SHOWN IS BASED ON HORSEPOWER AT 575 VOLTS.



LUG WIRE RANGE THREE 600MCM-2, AL. OR CU. FOR REACTOR.  
TIGHTENING TORQUE. 500 LB-IN

			TOLERANCES EXCEPT AS NOTED:	7878 N. 86th STREET MILWAUKEE, WI 53224
			DECIMAL .XX ± .03 .XXX ± .01	
			FRACTIONAL ± 1/32	KDR LINE REACTOR KDR41L, 768AMPS, 575 V
			ANGULAR ± 1/2°	
A TEST CHG WAS 17.3, 26	5/6/09	DSW	NO	DRG BY DSW DATE 4/23/09 SCALE TO FIT APPROVAL C
NO	REVISION	DATE	BY	DRG. NO. KDR41LDG SHT. 1 of 1