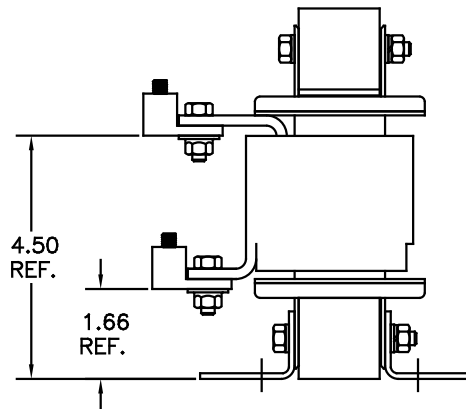
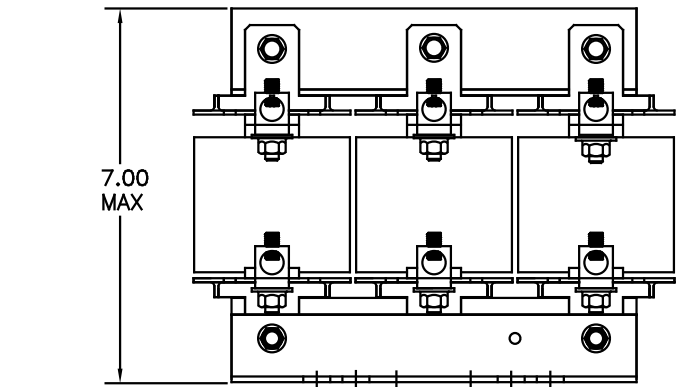
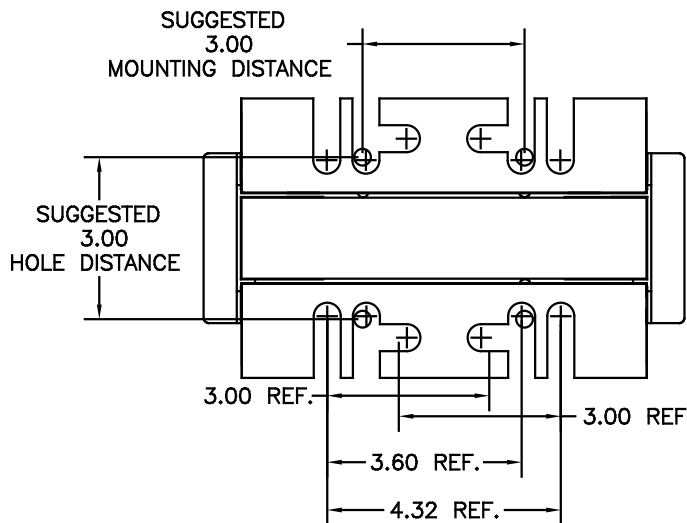
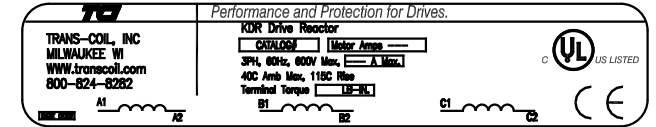


CATALOG NO	VOLTAGE	NEC MOTOR HP	NEC MOTOR CURRENT	WATTS LOSS	APPROX. WEIGHT-LBS
KDRULF3L	480	75	96	193	33
KDRULF3P	480	75	96	NOTE:1	33
KDRULF24L	208/240	30	88	135	33
KDRULF25L	208/240	40	114	149	33
KDRULF25H	208/240	30	88	179	33
KDRULF26H	208/240	40	114	193	33
KDRULF45L	575/600	100	99	194	33
KDRULF33P	575	100	99	NOTE:1	33



NOTE 1: WATTS LOSS WILL VARY DUE TO FUNDAMENTAL FREQUENCY, CARRIER FREQUENCY AND OTHER SYSTEM CHARACTERISTICS.
KDR DRIVE REACTORS COMPLY WITH THE THERMAL AND ALTITUDE STANDARDS SET FORTH BY NEMA ST20-1992..

NEC MOTOR CURRENTS SHOWN IN THE 208/240 VOLT CHART ARE BASED ON HORSEPOWER AT 208 VOLT. 575/600 VOLT CHART USE THE 575 VOLT CURRENT RATING.



LUG WIRE RANGE 2/0-6, AL OR CU.
FOR REACTOR.
TIGHTENING TORQUE. 120 LB-IN

				TOLERANCES (UNLESS AS NOTED)		TCI 7878 N. 86th STREET MILWAUKEE, WI 53224
				DECIMAL		
				.XX ±.03		KDRUL OPEN (FRAME F) KDR DRIVE REACTOR
				.XXX ±.01		
				FRACTIONAL ± 1/32		
				ANGULAR ± 1/2°		
NO.	REVISION	DATE	BY	DESIGNER	DATE	DRW. NO.
				DSW	04/26/04	C
				SOLE TO FIT	APPROV.	KDRULOPEN-7DG
						SHT. 1 OF 1