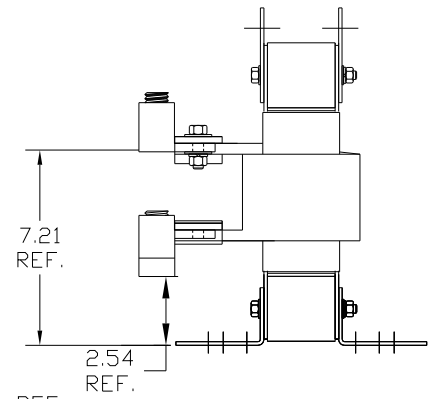
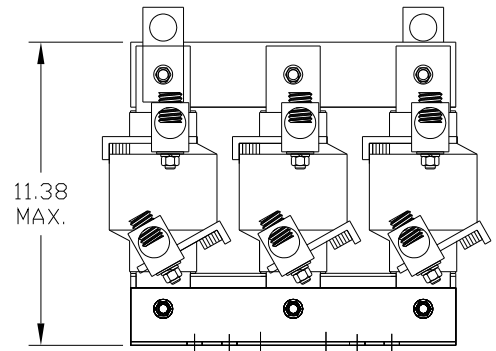


CATALOG NO	VOLTAGE	NEC MOTOR HP	NEC MOTOR CURRENT	WATTS LOSS	APPROX. WEIGHT-LBS
KDRULL1H	480	250	302	548	120

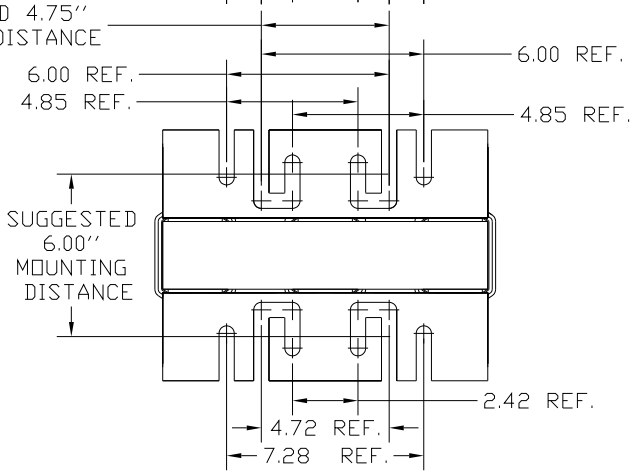
NOTE 1: WATTS LOSS WILL VARY DUE TO FUNDAMENTAL FREQUENCY, CARRIER FREQUENCY AND OTHER SYSTEM CHARACTERISTICS.
KDR DRIVE REACTORS COMPLY WITH THE THERMAL AND ALTITUDE STANDARDS SET FORTH BY NEMA ST20-1992..

NEC MOTOR CURRENTS SHOWN IN THE 208/240 VOLT CHART ARE BASED ON HORSEPOWER AT 208 VOLT. 575/600 VOLT CHART USE THE 575 VOLT CURRENT RATING.



LUG WIRE RANGE ONE 600MCM-4
FOR REACTOR. TWO 250MCM-1/0, AL. OR CU.
TIGHTENING TORQUE. 500 LB-IN

SUGGESTED 4.75" MOUNTING DISTANCE



TCI TRANS-COIL, INC MILWAUKEE WI WWW.transcoil.com 800-824-8282	Performance and Protection for Drives. KDR Drive Reactor		
	CATALOG # <input type="text"/> Motor Amps --- <input type="text"/>	3PH, 60Hz, 600V Max, --- A Max. 40C Amb Max, 155C Rise Terminals Torque <input type="text"/> LB-IN	
DATE 2006			

STRIP 2.40	2.50 STACK	HI-POT VOLT	VAC
		2650	468-2

				TOLERANCES (EXCEPT AS NOTED) DECIMAL .XX ± .03 .XXX ± .01 FRACTIONAL ± 1/32 ANGULAR ± 1/2°	7878 N. 86th STREET MILWAUKEE, WI 53224
				KDRUL OPEN (FRAME L) KDR DRIVE REACTOR	
NO	REVISION	DATE	BY	DRN BY DSW DATE 05/04/04 DWG. NO. B KDRULOPEN-79DG SCALE TO FIT APPRVD. SHT. 1 OF 1	