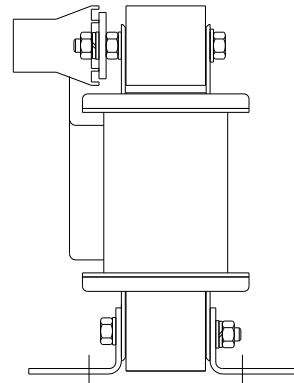
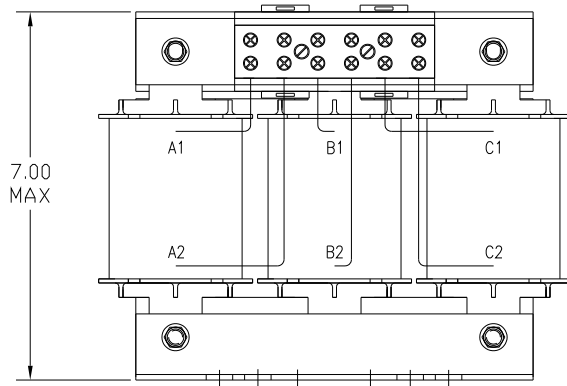


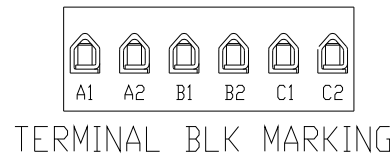
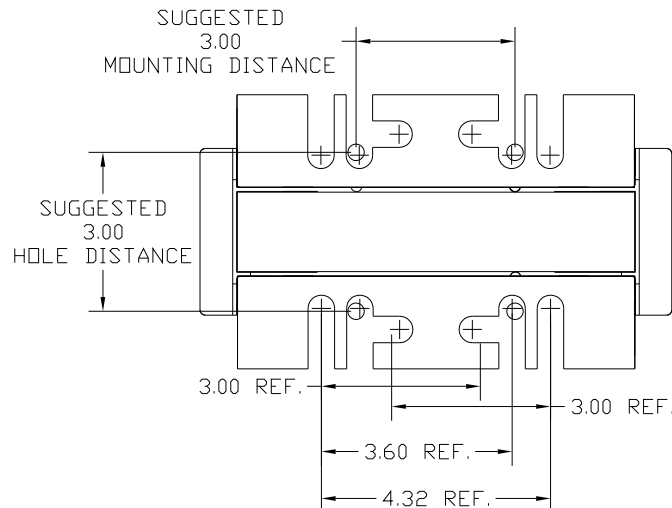
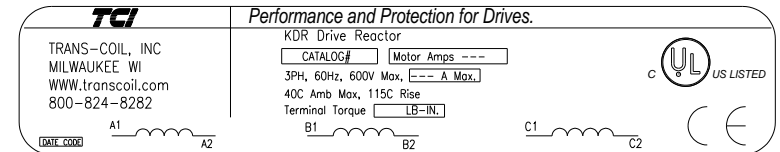
| CATALOG NO | VOLTAGE | NEC MOTOR HP | NEC MOTOR CURRENT | WATTS LOSS | APPROX. WEIGHT-LBS |
|------------|---------|--------------|-------------------|------------|--------------------|
| KDRULF2L | 480 | 50 | 65 | 114 | 25 |
| KDRULF4L | 480 | 60 | 77 | 169 | 25 |
| KDRULF4H | 480 | 40 | 52 | 169 | 25 |
| KDRULF1H | 480 | 50 | 65 | 191 | 25 |
| KDRULF2H | 480 | 60 | 77 | 226 | 25 |
| KDRULF1P | 480 | 50 | 65 | NOTE:1 | 25 |
| KDRULF2P | 480 | 60 | 77 | NOTE:1 | 25 |
| KDULF28H | 208/240 | 25 | 74.8 | 151 | 30 |
| KDRULF46L | 575/600 | 60 | 62 | 181 | 30 |
| KDRULF47L | 575/600 | 75 | 77 | 194 | 30 |
| KDRULF44H | 575/600 | 40 | 41 | 172 | 30 |
| KDRULF45H | 575/600 | 50 | 52 | 166 | 30 |
| KDRULF31P | 575 | 60 | 62 | NOTE:1 | 25 |
| KDRULF32P | 575 | 75 | 77 | NOTE:1 | 25 |

TORQUE(LB-IN)=CUSTOMER WIRE
35=1 AWG THRU 4 AWG
30=6 AWG THRU 14 AWG
25=16 AWG THRU 22 AWG



NOTE 1: WATTS LOSS WILL VARY DUE TO FUNDAMENTAL FREQUENCY, CARRIER FREQUENCY AND OTHER SYSTEM CHARACTERISTICS. KDR DRIVE REACTORS COMPLY WITH THE THERMAL AND ALTITUDE STANDARDS SET FORTH BY NEMA ST20-1992..

NEC MOTOR CURRENTS SHOWN IN THE 208/240 VOLT CHART ARE BASED ON HORSEPOWER AT 208 VOLT. 575/600 VOLT CHART USE THE 575 VOLT CURRENT RATING.



NOTE: A1, A2, B1, B2, C1, C2, MARKINGS ON COIL AND TERMINAL BLOCK FOR REFERENCE ONLY.

| NO | REVISION | DATE | BY | TOLERANCES (EXCEPT AS NOTED) | DECIMAL | FRACTIONAL | ANGULAR | DRN BY | DATE | DWG NO. | SCALE | APPROV |
|----|----------|------|----|------------------------------|---------|------------|---------|--------|----------|---------------|--------|--------|
| | | | | .XX ±.03 | | ± 1/32 | ± 1/2° | DSW | 04/27/04 | KDRULOPEN-6DG | TO FIT | |
| | | | | .XXX ±.01 | | | | | | | | |
| | | | | | | | | | | | | |
| | | | | | | | | | | | | |

7878 N. 86th STREET
MILWAUKEE, WI 53224
KDRUL OPEN (FRAME F)
KDR DRIVE REACTOR
 SHT. 1 OF 1