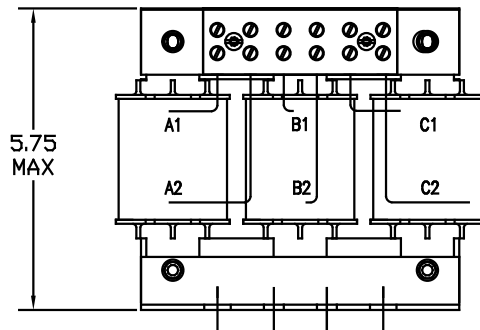
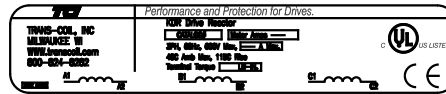
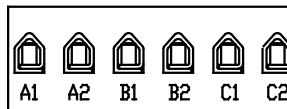
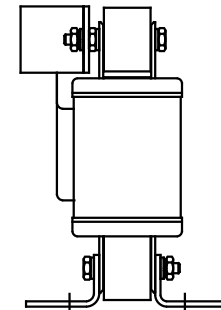


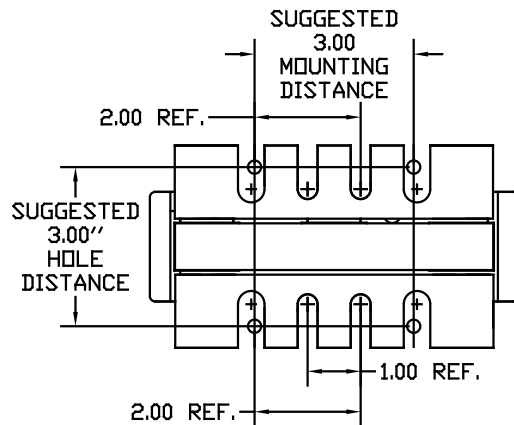
NOTE: A1, A2, B1, B2, C1, C2, MARKINGS ON COIL AND TERMINAL BLOCK FOR REFERENCE ONLY.



Block Wire Range: #18 to #4 AWG Solid or Stranded, Copper
Tightening Torque: 20 LB-IN



TERMINAL BLK MARKING



CATALOG NO	VOLTAGE	NEC MOTOR HP	NEC MOTOR CURRENT	WATTS LOSS	APPROX. WEIGHT-LBS	TORQUE (LB-IN)
KDRULD1L	480	25	34	96	10	20
KDRULD2L	480	30	40	105	10	20
KDRULD1P	480	15	21	NOTE: 1	10	20
KDRULD2P	480	20	27	NOTE: 1	10	20
KDRULD3P	480	25	34	NOTE: 1	12	20
KDRULD4P	480	30	40	NOTE: 1	12	20
KDRULD25L	208/240	10	30.8	64	12	20
KDRULD24L	208/240	15	46.2	85	12	20
KDRULD26L	208/240	20	59.4	94	12	20
KDRULD21H	208/240	10	30.8	91.8	12	20
KDRULD22H	208/240	15	46.2	108	12	20
KDRULD42L	575/600	30	32	106	12	20
KDRULD41H	575/600	20	22	106	12	20
KDRULD31P	575	15	17	NOTE: 1	10	20
KDRULD32P	575	20	22	NOTE: 1	10	20
KDRULD35P	575	25	27	NOTE: 1	10	20
KDRULD33P	575	30	32	NOTE: 1	12	20
KDRULD34P	575	40	41	NOTE: 1	12	20

NOTE 1: WATTS LOSS WILL VARY DUE TO FUNDAMENTAL FREQUENCY, CARRIER FREQUENCY AND OTHER SYSTEM CHARACTERISTICS.

KDR DRIVE REACTORS COMPLY WITH THE THERMAL AND ALTITUDE STANDARDS SET FORTH BY NEMA ST20-1992..

NEC MOTOR CURRENTS SHOWN IN THE 208/240 VOLT CHART ARE BASED ON HORSEPOWER AT 208 VOLT. 575/600 VOLT CHART USE THE 575 VOLT CURRENT RATING.

				TOLERANCES EXCEPT AS NOTED	 7878 N. 86th STREET MILWAUKEE, WI 53224
				DECIMAL	
				.XX ± .03 .XXX ± .01	
				FRACTIONAL ± 1/32	
				ANGULAR ± 1/2°	DRN BY DSW DATE 04/26/04 DWG NO. B SCALE TO FIT APPRVD. B
NO	REVISION	DATE	BY		KDRULOPEN (FRAME D) KDR DRIVE REACTOR KDRULOPEN-4DG SHT. 1 of 1