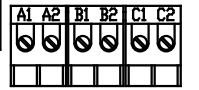
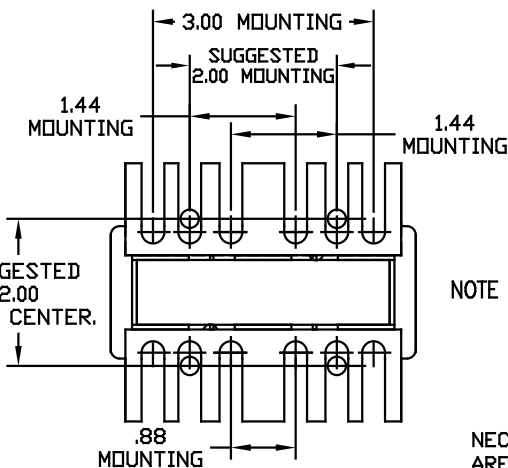
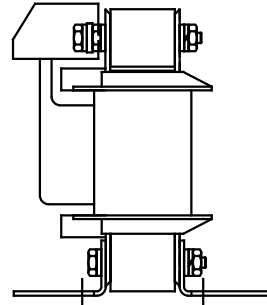
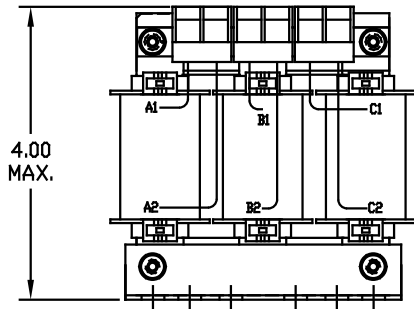


NOTE: A1, A2, B1, B2, C1, C2, MARKINGS ON COIL AND TERMINAL BLOCK FOR REFERENCE ONLY.



TERMINAL BLK MARKING

BLOCK WIRE RANGE #12-#18 AWG
FOR REACTOR AND TIGHTENING TORQUE. 10 LB-IN



NOTE 1: WATTS LOSS WILL VARY DUE TO FUNDAMENTAL FREQUENCY, CARRIER FREQUENCY AND OTHER SYSTEM CHARACTERISTICS.

KDR DRIVE REACTORS COMPLY WITH THE THERMAL AND ALTITUDE STANDARDS SET FORTH BY NEMA ST20-1992..

NEC MOTOR CURRENTS SHOWN IN THE 208/240 VOLT CHART ARE BASED ON HORSEPOWER AT 208 VOLT. 575/600 VOLT CHART USE THE 575 VOLT CURRENT RATING.

CATALOG NO	VOLTAGE	NEC MOTOR HP	NEC MOTOR CURRENT	WATTS LOSS	APPROX. WEIGHT-LBS	TORQUE (LB-IN)
KDRULA6L	480	0.5	1.1	5.6	2.5	10
KDRULA7L	480	0.75	1.6	10.0	4	10
KDRULA8L	480	1.0	2.1	10.4	4	10
KDRULA9L	480	1.5	3.0	17.0	4	10
KDRULA1L	480	2.0	3.4	19.0	4	10
KDRULA2L	480	3.0	4.8	23.0	4	10
KDRULA3L	480	5.0	7.6	49.0	4	10
KDRULA4L	480	7.5	11.0	40.0	4	10
KDRULA5L	480	10.0	14.0	64.0	4	10
KDRULA6H	480	0.5	1.1	9	3	10
KDRULA7H	480	0.75	1.6	15	4	10
KDRULA8H	480	1.0	2.1	12	4	10
KDRULA9H	480	1.5	3.0	23	4	10
KDRULA1H	480	2.0	3.4	33	4	10
KDRULA2H	480	3.0	4.8	38	4	10
KDRULA3H	480	5.0	7.6	80	4	10
KDRULA4H	480	7.5	11.0	77	5	10
KDRULA5H	480	10.0	14.0	111	5	10
KDRULA1P	480	2.0	3.4	NOTE: 1	4	10
KDRULA2P	480	3.0	4.8	NOTE: 1	4	10
KDRULA3P	480	5.0	7.6	NOTE: 1	4	10
KDRULA4P	480	7.5	11.0	NOTE: 1	5	10
KDRULA31P	575	2.0	2.7	NOTE: 1	4	10
KDRULA35P	575	3.0	3.9	NOTE: 1	4	10
KDRULA33P	575	5.0	6.1	NOTE: 1	4	10
KDRULA34P	575	7.5	9	NOTE: 1	5	10
KDRULA36P	575	10	11	NOTE: 1	5	10

				TOLERANCES EXCEPT AS NOTED:	7878 N. 86th STREET MILWAUKEE, WI 53224
				DECIMAL XX ± .03 .XXX ± .010 FRACTIONAL ± 1/16 ANGULAR ± 1/2°	
NO	REVISION	DATE	BY	SCALE 3/4"=1"	KDRUL OPEN (FRAME A) KDR DRIVE REACTOR DSG BY DSW DATE 04/23/04 Dwg. No. KDRULOPEN-1DG SCALE 3/4"=1" APPR. C SH. 1 of 1