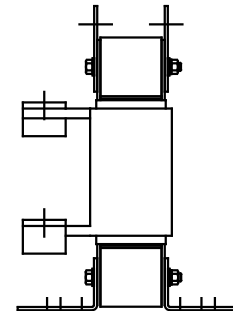
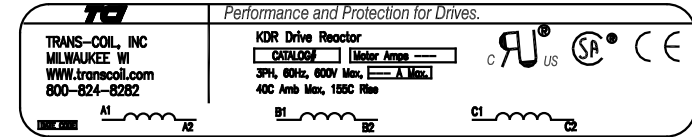


NOTE: A1, A2, B1, B2, C1, C2,
MARKINGS ON COIL
FOR REFERENCE ONLY.

CATALOG NO	VOLTAGE	NEC MOTOR HP	NEC MOTOR CURRENT	WATTS LOSS	APPROX WT-LBS	TORQUE (LB-IN)
KDRL35P	575	450	412	SEE NOTE 1	85	--

NOTE 1: WATTS LOSS WILL VARY DUE TO FUNDAMENTAL FREQUENCY, CARRIER FREQUENCY AND OTHER SYSTEM CHARACTERISTICS.

KDR DRIVE REACTORS COMPLY WITH THE THERMAL AND ALTITUDE STANDARDS SET FORTH BY NEMA ST20-1992..



				TOLERANCES (EXCEPT AS NOTED)		TCI 7878 N. 86th STREET MILWAUKEE, WI 53224	
				DECIMAL		KDR DRIVE REACTOR	
				.XX ±.03		575V, OUTPUT, "L" FRAME	
				.XXX ±.01		DRAWN BY RJC DATE 08/03/01	
ADD MARKING NOTE				11/27/00	DSW	DWG. NO. KDRL35PDG	
2235, MOUNTING CHG				09/15/00	DSW	SCALE TO FIT	
NO REVISION				DATE	BY	SHT. 1 OF 1	