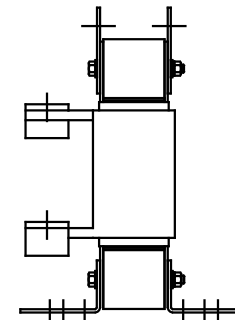
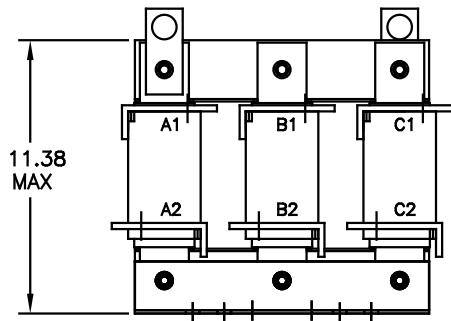


| CATALOG NO | VOLTAGE | NEC MOTOR HP | NEC MOTOR CURRENT | WATTS LOSS | APPROX WT-LBS | TORQUE (LB-IN) |
|------------|---------|--------------|-------------------|------------|---------------|----------------|
| KDRL2P | 480 | 400 | 477 | SEE NOTE 1 | 95 | -- |

NOTE 1: WATTS LOSS WILL VARY DUE TO FUNDAMENTAL FREQUENCY, CARRIER FREQUENCY AND OTHER SYSTEM CHARACTERISTICS.

KDR DRIVE REACTORS COMPLY WITH THE THERMAL AND ALTITUDE STANDARDS SET FORTH BY NEMA ST20-1992..



TCI Performance and Protection for Drives.

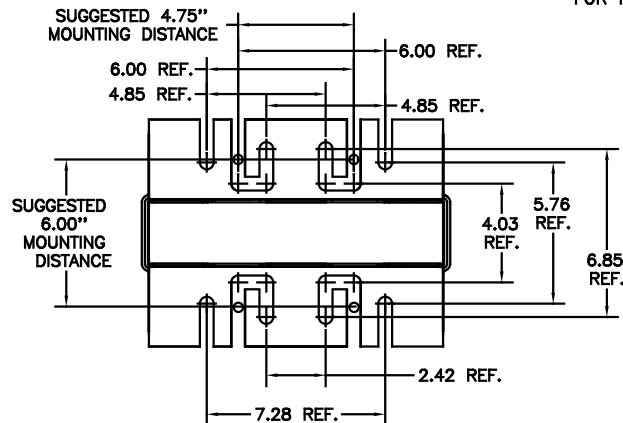
TRANS-COIL, INC
MILWAUKEE WI
WWW.transcoil.com
800-824-8282

KDR Drive Reactor
CATALOG Motor Amps
3PH, 60Hz, 480V Max. A Max.
40C Amb Max, 195C Rise

UL[®] US SP[®] CE

A1 A2 B1 B2 C1 C2

NOTE: A1, A2, B1, B2, C1, C2, MARKINGS ON COIL FOR REFERENCE ONLY.



| | | | | TOLERANCES (UNLESS AS NOTED) | | TOL. NO. | |
|--------------------|----------|------|----------|------------------------------|-------------|--|--------------|
| | | | | DECIMAL | | C | |
| | | | | .XX ±.03 | | KDR DRIVE REACTOR 480V, OUTPUT, "L" FRAME | |
| | | | | .XXX±.01 | | | |
| ADD MARKING NOTE | | | 11/27/08 | DSW | FREQUENCY | DATE BY DATE BY DATE BY | |
| 2235, MOUNTING CHG | | | 09/15/08 | DSW | ANGULAR | | |
| NO | REVISION | DATE | BY | ± 1/2" | SOLE TO FIT | 08/03/08 | 800-824-8282 |

TCI 7878 N. 86th STREET
MILWAUKEE, WI 53224

DATE BY DATE BY DATE BY
C KDRL2PDG
SHT. 1 OF 1