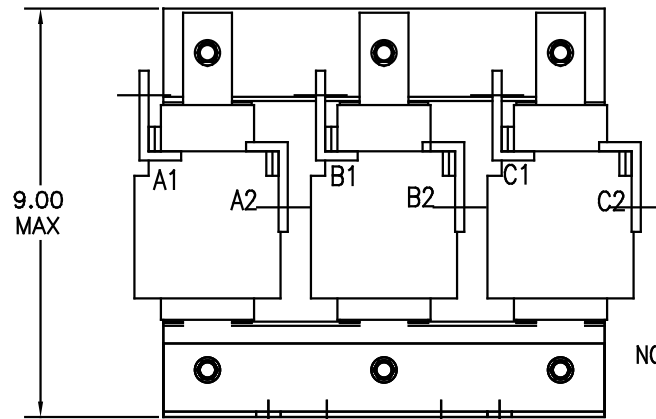
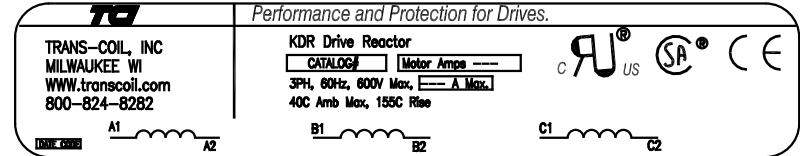
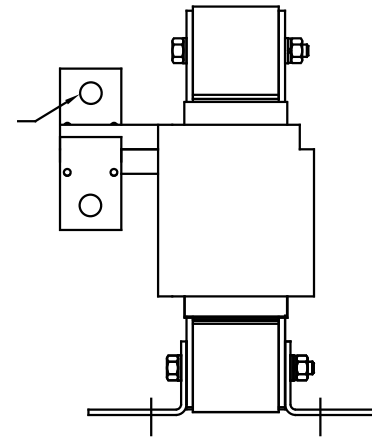


CATALOG NO	VOLTAGE	NEC MOTOR HP	NEC MOTOR CURRENT	WATTS LOSS	APPROX WT-LBS
KDRI42L	575/600	200	192	342	50

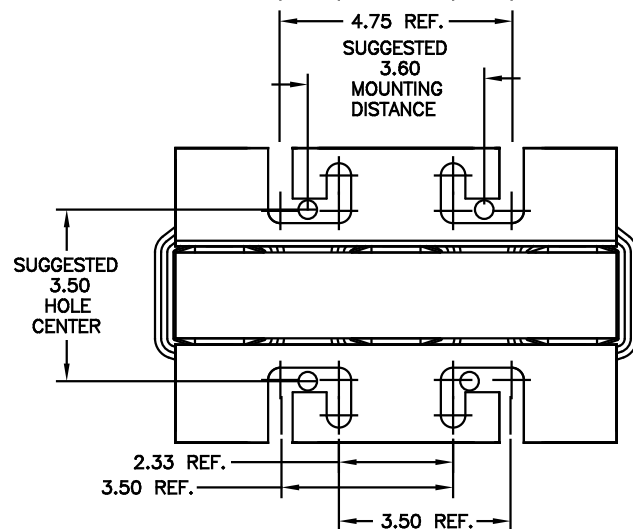
NOTE: NEC MOTOR CURRENT SHOWN ARE BASED ON HORSEPOWER AT 575 VOLTS.



.44 DIA HOLE (6 PLACES)



NOTE: A1, A2, B1, B2, C1, C2, MARKINGS ON COIL FOR REFERENCE ONLY.



				TOLERANCES (UNLESS AS NOTED)		TCI 7878 N. 86th STREET MILWAUKEE, WI 53224	
				DECIMAL			
				.XX	±.03	KDR 600V SERIES, LOW Z WIDE RANGE REACTOR	
				.XXX	±.01		
				FRACTIONAL	± 1/32		
				ANGULAR	± 1/2°		
ADD MARKING NOTE	11/22/03	DSW				DATE BY	1/29/03
#2235, MOUNTING CHG	05/27/03	DSW				DATE BY	1/29/03
#2112 ADD MOTOR AMPS	07/19/03	DSW				DATE BY	1/29/03
NO	REVISION	DATE	BY			SCALE	1/2"=1"