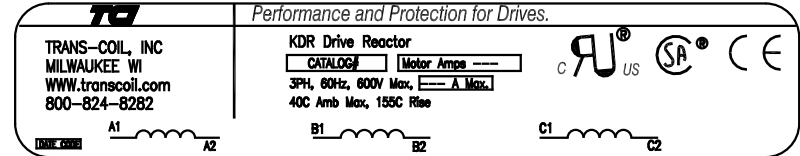
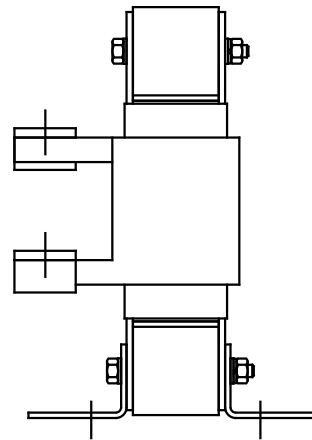
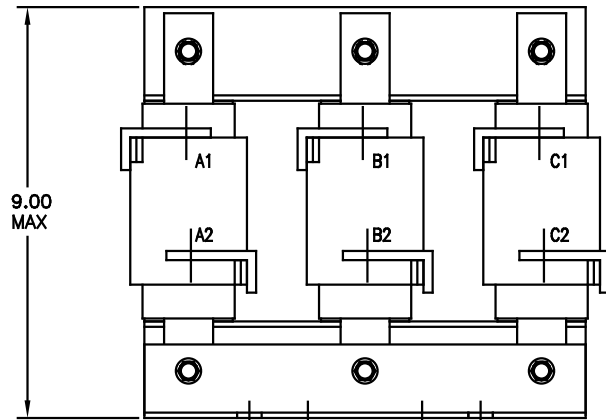


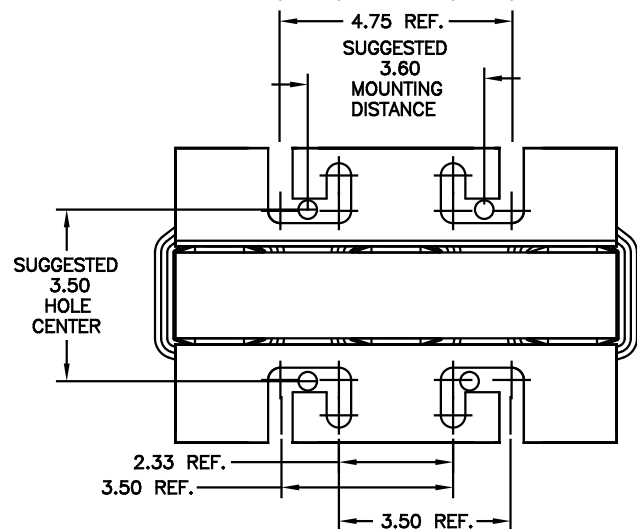
CATALOG NO	VOLTAGE	NEC MOTOR HP	NEC MOTOR CURRENT	WATTS LOSS	APPROX WT-LBS	TORQUE (LB-IN)
KDR12P	480	150	180	SEE NOTE 1	45	---



NOTE 1: WATTS LOSS WILL VARY DUE TO FUNDAMENTAL FREQUENCY, CARRIER FREQUENCY AND OTHER SYSTEM CHARACTERISTICS. KDR DRIVE REACTORS COMPLY WITH THE THERMAL AND ALTITUDE STANDARDS SET FORTH BY NEMA ST20-1992..



NOTE: A1, A2, B1, B2, C1, C2, MARKINGS ON COIL FOR REFERENCE ONLY.



				TOLERANCES (UNLESS AS NOTED)		TCI 7878 N. 86th STREET MILWAUKEE, WI 53224		
				DECIMAL				
				.XX ±.03				
				.XXX ±.01				
ADD MARKING NOTE	11/22/03	DSW		FRACTIONAL ± 1/32				KDR DRIVE REACTOR 480 V, OUTPUT, "I" FRAME
2235, MOUNTING CHG	05/27/03	DSW		ANGULAR ± 1/2°				DATE BY DATE 7/30/03
#2112 ADD MOTOR AMPS	07/19/03	DSW						NO. RJC DATE 7/30/03
NO	REVISION	DATE	BY	± 1/2°				SCALE 1/2"=1" C KDR12PDG
								SHIT. 1 OF 1