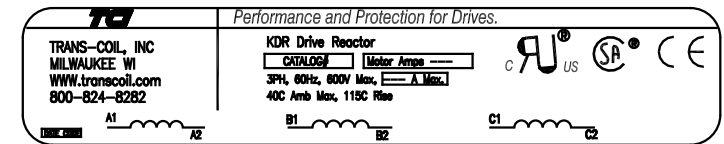
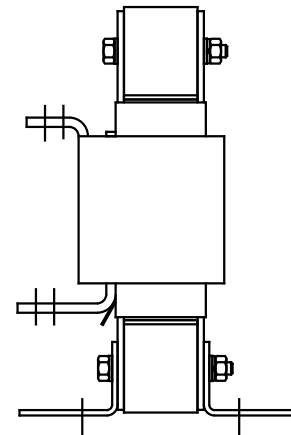
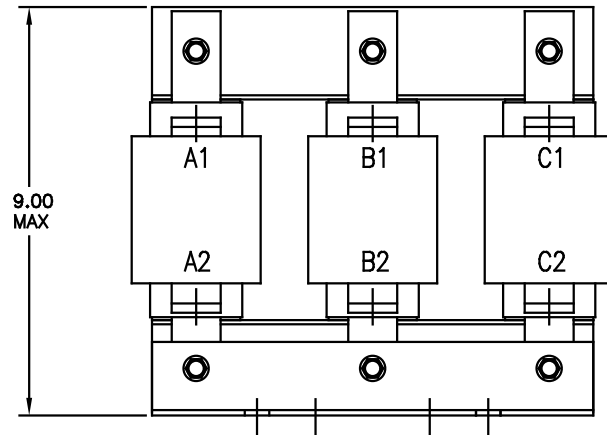
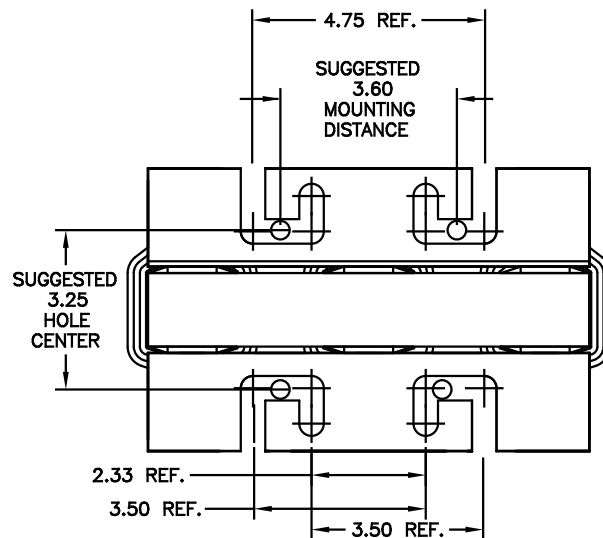


CATALOG NO	VOLTAGE	NEC MOTOR HP	NEC MOTOR CURRENT	WATTS LOSS	APPROX WT-LBS	TORQUE (LB-IN)
KDRH1P	480	100	124	SEE NOTE	40	--

NOTE : WATTS LOSS WILL VARY DUE TO FUNDAMENTAL FREQUENCY, CARRIER FREQUENCY AND OTHER SYSTEM CHARACTERISTICS.
 KDR DRIVE REACTORS COMPLY WITH THE THERMAL AND ALTITUDE STANDARDS SET FORTH BY NEMA ST20-1992..



NOTE: A1, A2, B1, B2, C1, C2, MARKINGS ON COIL FOR REFERENCE ONLY.



				TOLERANCES (EXCEPT AS NOTED)		TCI 7878 N. 86th STREET MILWAUKEE, WI 53224	
				DECIMAL	FRACTIONAL	DATE	APP'D.
D	ADD MARKING NOTE	11/22/03	DSW	.XX ±.03			
C	2235, MOUNTING CHG.	05/27/03	DSW	.XXX±.010			
E	2128, ADD H1H	10/12/03	DSW	± 1/16			
A	#2112 ADD MOTOR AMPS	07/19/03	DSW	± 1/2"			
NO	REVISION	DATE	BY				

KDR DRIVE REACTOR
480 V, OUTPUT, "H" FRAME
DATE BY RJC DATE 05/11/04 DATE NO. C KDRH1PDG
SCALE 1/2"=1" APP'D.

SHT. 1 OF 1