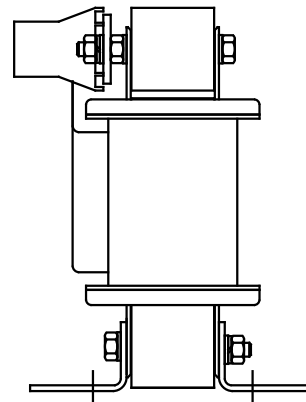
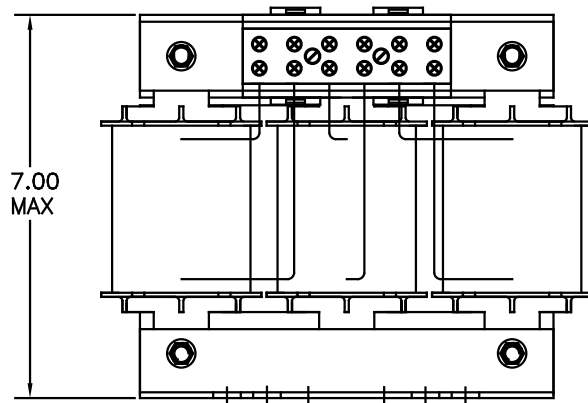
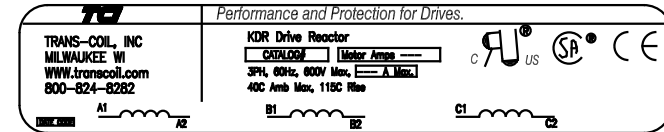
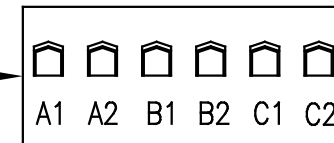


CATALOG NO	VOLTAGE	NEC MOTOR HP	NEC MOTOR CURRENT	WATTS LOSS	APPROX WT-LBS
KDRF47L	575/600	75	77	194	30

NOTE: NEC MOTOR CURRENT SHOWN ARE BASED ON HORSEPOWER AT 575 VOLTS.



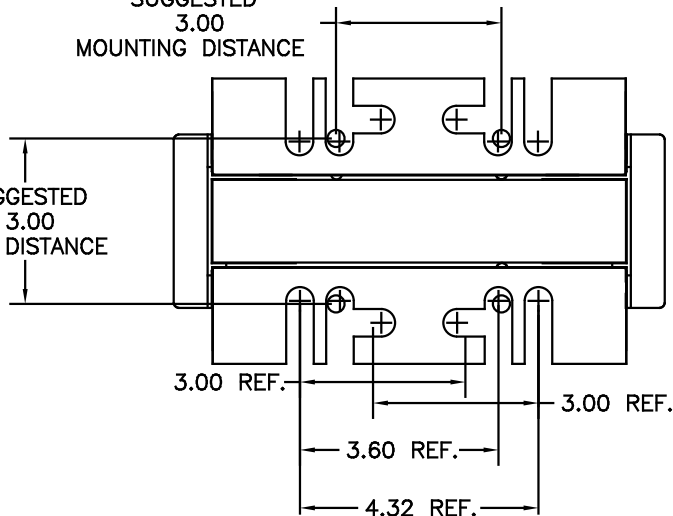
NOTE: TORQUE (LB-IN) = CUSTOMER WIRE SIZE
 35 = # 1 AWG THRU # 4 AWG
 30 = # 6 AWG THRU #14 AWG
 25 = #16 AWG THRU #22 AWG



NOTE: A1, A2, B1, B2, C1, C2, MARKINGS ON TERMINAL BLOCK FOR REFERENCE ONLY.

SUGGESTED
3.00
MOUNTING DISTANCE

SUGGESTED
3.00
HOLE DISTANCE



				TOLERANCES (UNLESS AS NOTED)	
				DECIMAL	
				.XX	±.03
				.XXX	±.01
				FRACTIONAL	± 1/32
				ANGULAR	± 1/2°
ADD MARKING NOTE	11/22/06	DSW			
2235, MOUNTING CHG	09/15/06	DSW			
NO REVISION	DATE	BY			

TCI 7878 N. 86th STREET
MILWAUKEE, WI 53224

KDR 600V SERIES, LOW Z
WIDE RANGE DRIVE REACTOR

DATE BY DSW DATE 05/08/07 DRAW NO. C KDRF47LDG
SCALE TO FIT APPROV. SHIT. 1 OF 1