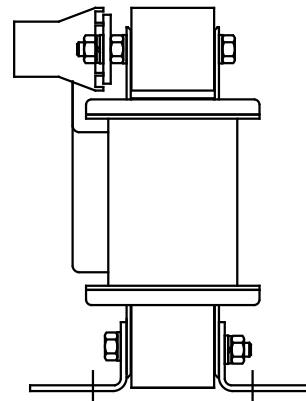
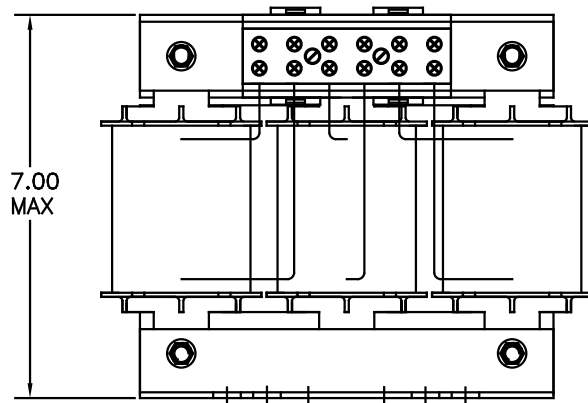
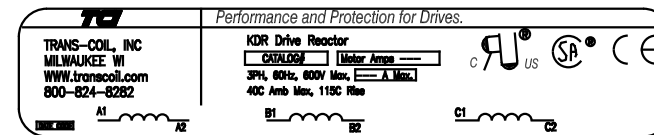
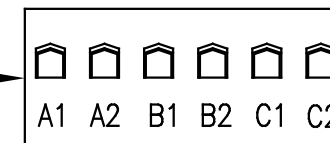


CATALOG NO	VOLTAGE	NEC MOTOR HP	NEC MOTOR CURRENT	WATTS LOSS	APPROX WT-LBS
KDRF46L	575/ 600	60	62	181	30

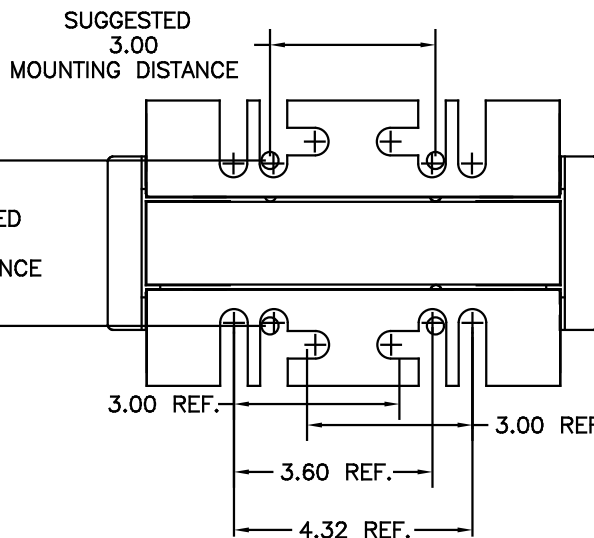
NOTE: NEC MOTOR CURRENT SHOWN ARE BASED ON HORSEPOWER AT 575 VOLTS.



NOTE: TORQUE (LB-IN) = CUSTOMER WIRE SIZE
 35 = # 1 AWG THRU # 4 AWG
 30 = # 6 AWG THRU #14 AWG
 25 = #16 AWG THRU #22 AWG



NOTE: A1, A2, B1, B2, C1, C2, MARKINGS ON TERMINAL BLOCK FOR REFERENCE ONLY.



				TOLERANCES (UNLESS AS NOTED)	
				DECIMAL	
				.XX	±.03
				.XXX	±.01
				FRACTIONAL	± 1/32
				ANGULAR	± 1/2°
ADD MARKING NOTE	11/22/06	DSW			
2235, MOUNTING CHG	09/15/06	DSW			
NO REVISION	DATE	BY			

TCI	7878 N. 86th STREET MILWAUKEE, WI 53224
KDR 600V SERIES, LOW Z WIDE RANGE DRIVE REACTOR	
DATE BY DSW	DATE 05/08/07
SCALE TO FIT	APPROV. C

KDRF46LDG
SHT. 1 OF 1