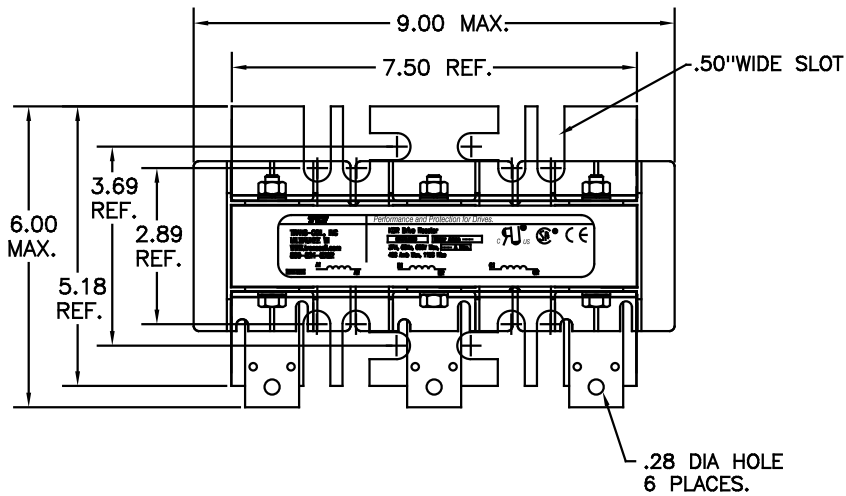
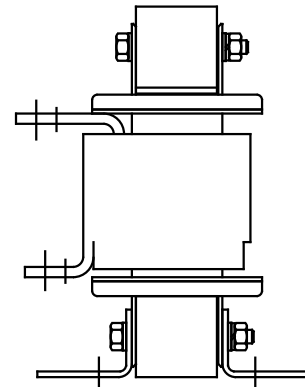
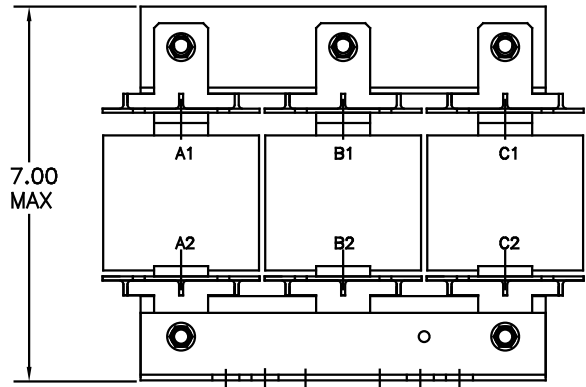


CATALOG NO	VOLTAGE	NEC MOTOR HP	NEC MOTOR CURRENT	WATTS LOSS	APPROX WT-LBS	TORQUE (LB-IN)
KDRF3P	480	75	96	SEE NOTE 1	30	--

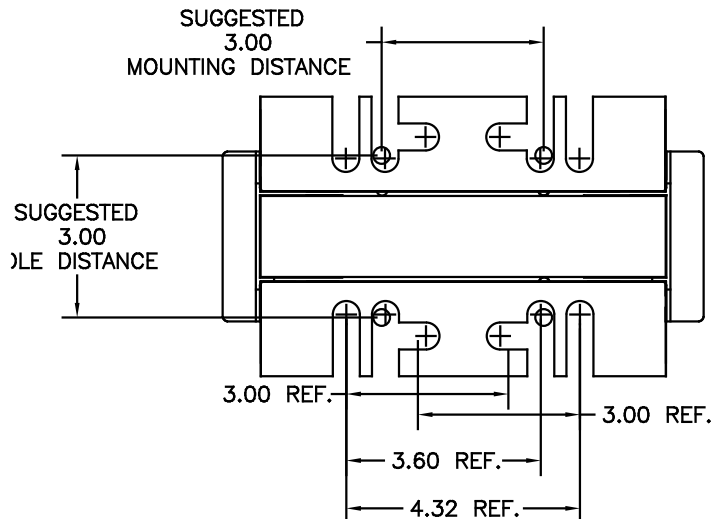


TRANS-COIL, INC MILWAUKEE WI WWW.transcoil.com 800-824-8282	Performance and Protection for Drives.		
	KDR Drive Reactor CATALOG # <input type="text"/> Motor Amps <input type="text"/> 3PH, 60Hz, 600V Max, <input type="text"/> A Max. 40C Amb Max, 115C Rise		

NOTE 1: WATTS LOSS WILL VARY DUE TO FUNDAMENTAL FREQUENCY, CARRIER FREQUENCY AND OTHER SYSTEM CHARACTERISTICS.
 KDR DRIVE REACTORS COMPLY WITH THE THERMAL AND ALTITUDE STANDARDS SET FORTH BY NEMA ST20-1992..



NOTE: A1, A2, B1, B2, C1, C2, MARKINGS ON COIL FOR REFERENCE ONLY.



		TOLERANCES (UNLESS AS NOTED)		7878 N. 86th STREET MILWAUKEE, WI 53224	
		DECIMAL		KDR DRIVE REACTOR	
		.XX ±.03		480 V, OUTPUT "F" FRAME	
		.XXX ±.01		DATE BY DATE BY DATE BY	
CADD MARKING NOTE		11/21/00	DSW	FRONTVIEW	± 1/32
E2235, MOUNTING CHG		09/15/00	DSW	ANGULAR	± 1/2
NO	REVISION	DATE	BY	SOLE TO FIT	APPROV. C KDRF3PDG