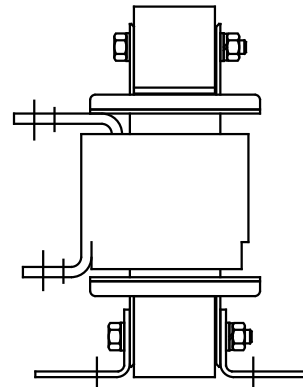
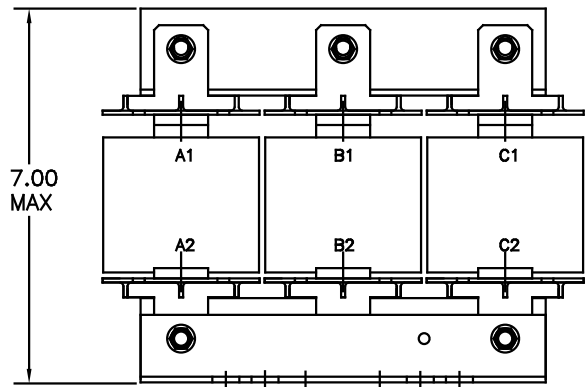


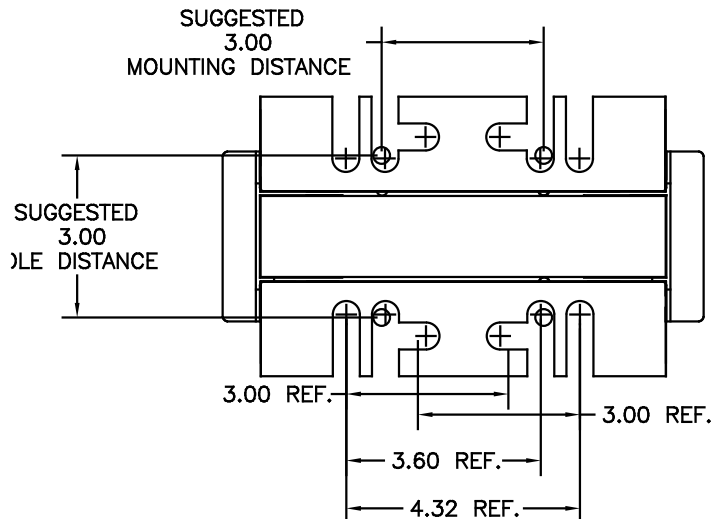
CATALOG NO	VOLTAGE	NEC MOTOR HP	NEC MOTOR CURRENT	WATTS LOSS	APPROX WT-LBS	TORQUE (LB-IN)
KDRF33P	575	100	99	SEE NOTE 1	30	--

TRANS-COIL, INC MILWAUKEE WI WWW.transcoil.com 800-824-8282	Performance and Protection for Drives.		
	KDR Drive Reactor CATALOG Motor Amps 3PH, 60Hz, 600V Max. A Max. 40C Amb Max, 115C Rise		

NOTE 1: WATTS LOSS WILL VARY DUE TO FUNDAMENTAL FREQUENCY, CARRIER FREQUENCY AND OTHER SYSTEM CHARACTERISTICS.
 KDR DRIVE REACTORS COMPLY WITH THE THERMAL AND ALTITUDE STANDARDS SET FORTH BY NEMA ST20-1992..



NOTE: A1, A2, B1, B2, C1, C2, MARKINGS ON COIL FOR REFERENCE ONLY.



				TOLERANCES (UNLESS AS NOTED)		7878 N. 86th STREET MILWAUKEE, WI 53224	
				DECIMAL			
				.XX ±.03			
				.XXX±.01			
CADD MARKING NOTE				11/22/06	DSW	FRACTIONAL	KDR DRIVE REACTOR 575 V, OUTPUT "F" FRAME
E2235, MOUNTING CHG				09/15/06	DSW	ANGULAR	
NO	REVISION	DATE	BY	± 1/2"			DATE BY DATE DATE TO FIT RJC 07/30/07 APPROV.
							C KDRF33PDG SH. 1 of 1