

CATALOG NO	VOLTAGE	NEC MOTOR HP	NEC MOTOR CURRENT	WATTS LOSS	APPROX WT-LBS	TORQUE (LB-IN)
KDRF32P	575	75	77	SEE NOTE 1	25	SEE NOTE 2

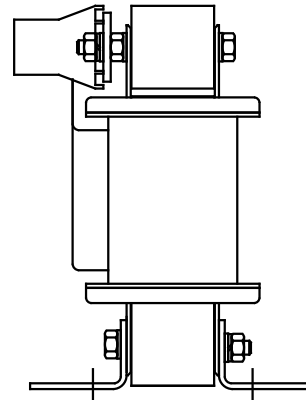
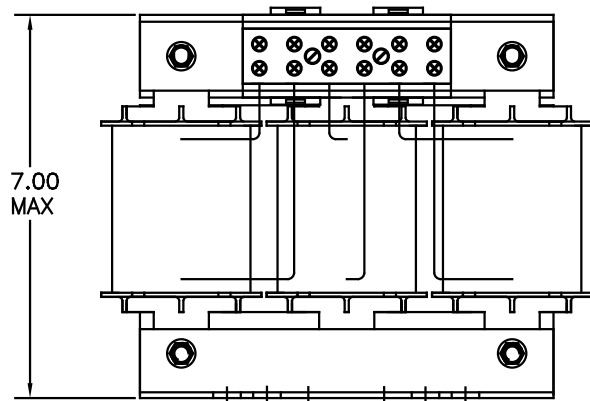
TRANS-COIL, INC
MILWAUKEE WI
WWW.transcoil.com
800-824-8282

Performance and Protection for Drives.

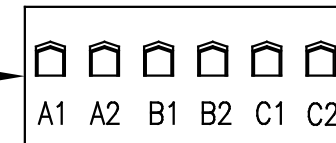
KDR Drive Reactor

CATALOG Motor Amps
3PH, 60Hz, 600V Max, A Max
40C Amb Max, 119C Rise

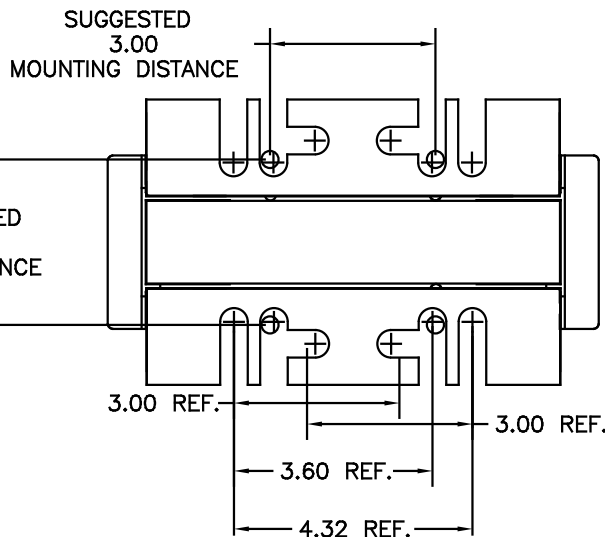
NOTE 1: WATTS LOSS WILL VARY DUE TO FUNDAMENTAL FREQUENCY, CARRIER FREQUENCY AND OTHER SYSTEM CHARACTERISTICS.
KDR DRIVE REACTORS COMPLY WITH THE THERMAL AND ALTITUDE STANDARDS SET FORTH BY NEMA ST20-1992..



NOTE: TORQUE (LB-IN) = CUSTOMER WIRE SIZE
 35 = # 1 AWG THRU # 4 AWG
 30 = # 6 AWG THRU #14 AWG
 25 = #16 AWG THRU #22 AWG



NOTE: A1, A2, B1, B2, C1, C2, MARKINGS ON TERMINAL BLOCK FOR REFERENCE ONLY.



				TOLERANCES (UNLESS OTHERWISE SPECIFIED)	
				DECIMAL	FRACTIONAL
				.XX ±.03	± 1/32
				.XXX ±.01	± 1/2
ADD MARKING NOTE	11/22/06	DSW			
2235, MOUNTING CHG	09/15/06	DSW			
NO	REVISION	DATE	BY	± 1/2"	

TCI 7878 N. 86th STREET
MILWAUKEE, WI 53224

KDR DRIVE REACTOR
575 V, OUTPUT, "F" FRAME

DATE BY DSW DATE 05/08/07
SOLE TO FIT APPROV

NO. C KDRF32PDG
SHT. 1 OF 1