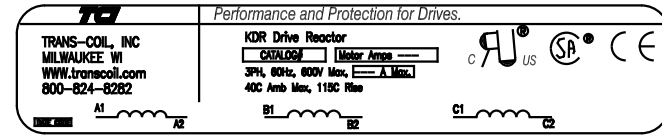
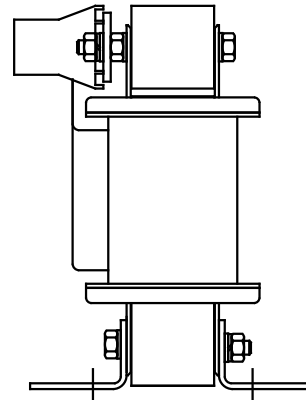
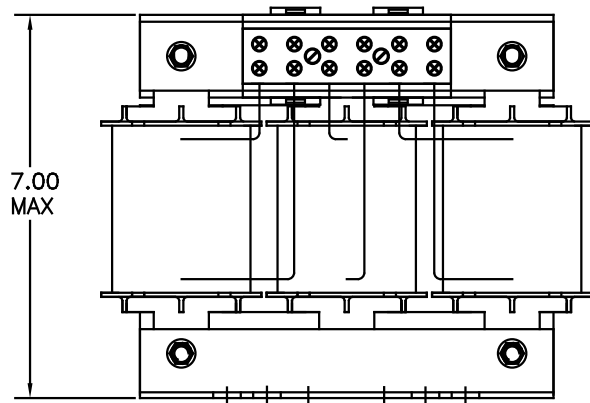


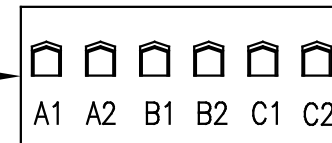
CATALOG NO	VOLTAGE	NEC MOTOR HP	NEC MOTOR CURRENT	WATTS LOSS	APPROX WT-LBS	TORQUE (LB-IN)
KDRF31P	575	60	62	SEE NOTE 1	25	SEE NOTE 2



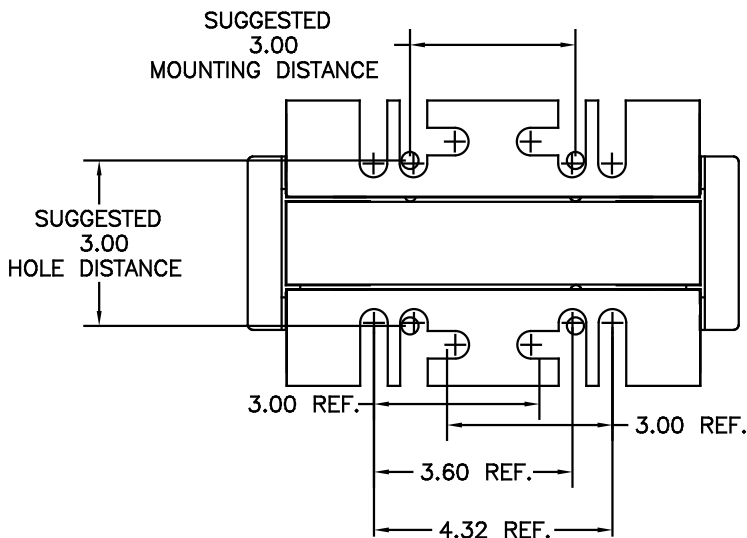
NOTE 1: WATTS LOSS WILL VARY DUE TO FUNDAMENTAL FREQUENCY, CARRIER FREQUENCY AND OTHER SYSTEM CHARACTERISTICS.  
KDR DRIVE REACTORS COMPLY WITH THE THERMAL AND ALTITUDE STANDARDS SET FORTH BY NEMA ST20-1992..



NOTE: TORQUE (LB-IN) = CUSTOMER WIRE SIZE  
35 = # 1 AWG THRU # 4 AWG  
30 = # 6 AWG THRU #14 AWG  
25 = #16 AWG THRU #22 AWG



NOTE: A1, A2, B1, B2, C1, C2, MARKINGS ON TERMINAL BLOCK FOR REFERENCE ONLY.



				TOLERANCES (UNLESS AS NOTED)		TCI 7878 N. 86th STREET MILWAUKEE, WI 53224	
				DECIMAL			
				.XX ±.03			
				.XXX±.01			
ADD MARKING NOTE				11/22/06	DSW	FRONTVIEW	± 1/32
2235, MOUNTING CHG				09/15/06	DSW	ANGULAR	± 1/2"
NO	REVISION	DATE	BY	± 1/2"	SOLE TO FIT	DATE 05/08/07	APP'D. DSW
						KDRF31PDG	
						SHT. 1 OF 1	