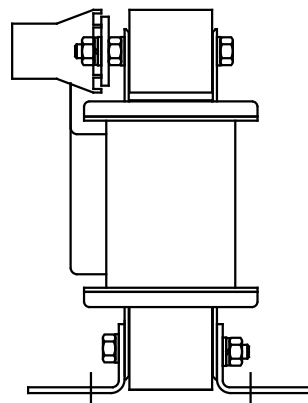
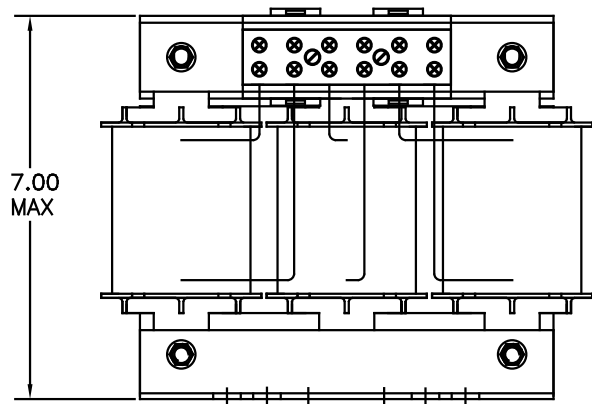


| CATALOG NO | VOLTAGE | NEC MOTOR HP | NEC MOTOR CURRENT | WATTS LOSS | APPROX WT-LBS | TORQUE (LB-IN) |
|------------|---------|--------------|-------------------|------------|---------------|----------------|
| KDRF2P     | 480     | 60           | 77                | SEE NOTE 1 | 25            | SEE NOTE 2     |

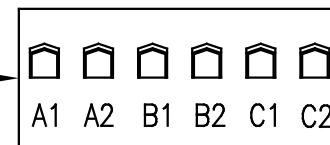
**TCI** Performance and Protection for Drives.

|   |   |
|---|---|
| <p><b>TRANS-COIL, INC</b><br/>MILWAUKEE WI<br/>WWW.transcoil.com<br/>800-824-8282</p> | <p><b>KDR Drive Reactor</b><br/>           CATALOG Motor Amps<br/>           3PH, 60Hz, 600V Max, A Max<br/>           40C Amb Max, 119C Rise</p> |
|---|---|

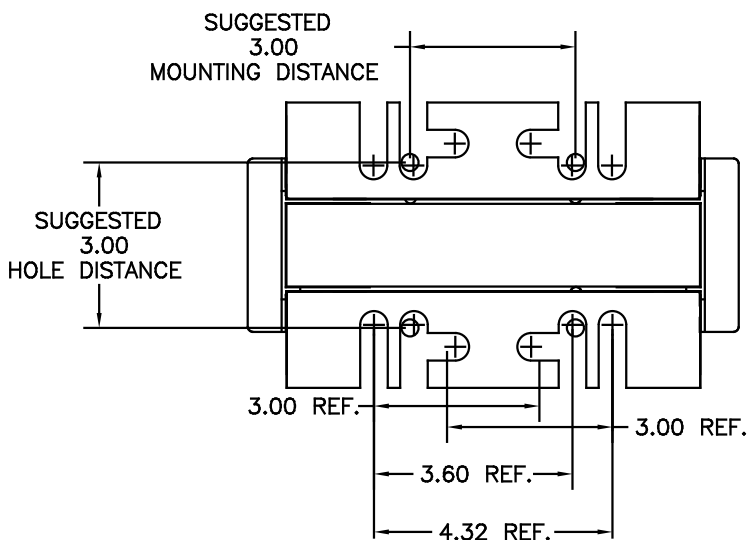
NOTE 1: WATTS LOSS WILL VARY DUE TO FUNDAMENTAL FREQUENCY, CARRIER FREQUENCY AND OTHER SYSTEM CHARACTERISTICS.  
 KDR DRIVE REACTORS COMPLY WITH THE THERMAL AND ALTITUDE STANDARDS SET FORTH BY NEMA ST20-1992..



NOTE: TORQUE (LB-IN) = CUSTOMER WIRE SIZE  
 35 = # 1 AWG THRU # 4 AWG  
 30 = # 6 AWG THRU #14 AWG  
 25 = #16 AWG THRU #220 AWG



NOTE: A1, A2, B1, B2, C1, C2, MARKINGS ON TERMINAL BLOCK FOR REFERENCE ONLY.



|                      |  |  |  | TOLERANCES (UNLESS AS NOTED) |            | <b>TCI</b> 7878 N. 86th STREET MILWAUKEE, WI 53224   |             |
|----------------------|--|--|--|------------------------------|------------|--|-------------|
|                      |  |  |  | DECIMAL                      | FRACTIONAL |  |             |
|                      |  |  |  | .XX ±.03                     |            | <b>KDR DRIVE REACTOR</b><br>480 V, OUTPUT, "F" FRAME |             |
|                      |  |  |  | .XXX±.01                     |            |  |             |
| E ADD MARKING NOTE   |  |  |  | 11/21/00                     | DSW        | FRW  | C KDRF2PDG  |
| A 2235, MOUNTING CHG |  |  |  | 09/15/00                     | DSW        | FRW  |             |
| NO REVISION          |  |  |  | DATE                         | BY         | ± 1/2"   | SHT. 1 OF 1 |