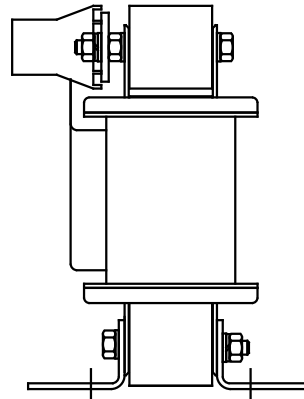
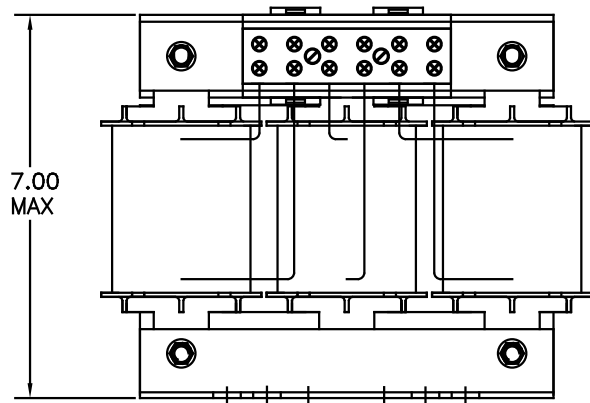
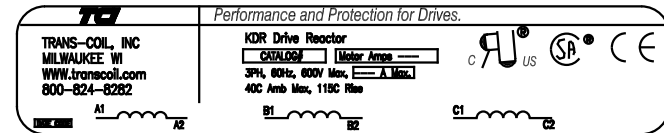
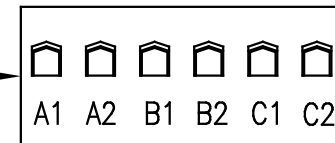


CATALOG NO	VOLTAGE	NEC MOTOR HP	NEC MOTOR CURRENT	WATTS LOSS	APPROX WT-LBS
KDRF28H	208/240	25	74.8	151	30

NOTE: NEC MOTOR CURRENT SHOWN ARE BASED ON HORSEPOWER AT 208 VOLTS.



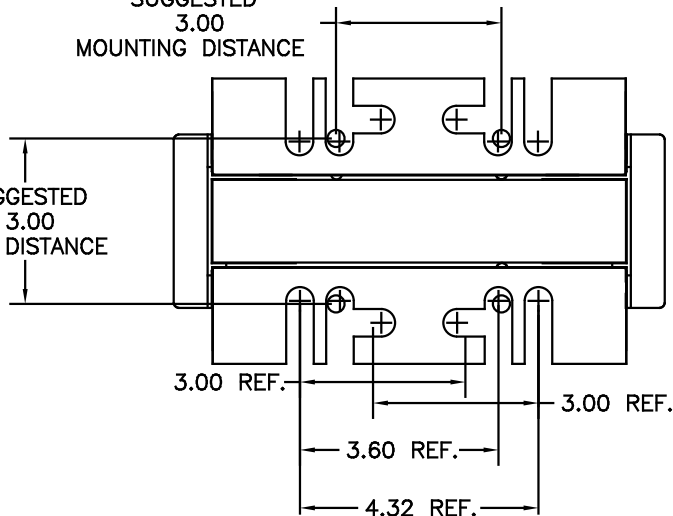
NOTE: TORQUE (LB-IN) = CUSTOMER WIRE SIZE
 35 = # 1 AWG THRU # 4 AWG
 30 = # 6 AWG THRU #14 AWG
 25 = #16 AWG THRU #22 AWG



NOTE: A1, A2, B1, B2, C1, C2, MARKINGS ON TERMINAL BLOCK FOR REFERENCE ONLY.

SUGGESTED
3.00
MOUNTING DISTANCE

SUGGESTED
3.00
HOLE DISTANCE



				TOLERANCES (UNLESS AS NOTED)	
				DECIMAL	
				.XX ±.03	
				.XXX±.01	
				FRACTIONAL	
				± 1/32	
				ANGULAR	
				± 1/2°	
E ADD MARKING NOTE		11/22/08	DSW	REVISED	
A 2235, MOUNTING CHG		09/15/08	DSW	REVISED	
NO	REVISION	DATE	BY	SOLE TO FIT	APPROV

TCI 7878 N. 86th STREET
MILWAUKEE, WI 53224

**KDR 200V SERIES, HIGH Z
WIDE RANGE DRIVE REACTOR**

DATE: 05/08/09
BY: DSW
APPROV: [Signature]

NO: C KDRF28HDG
SHT. 1 OF 1