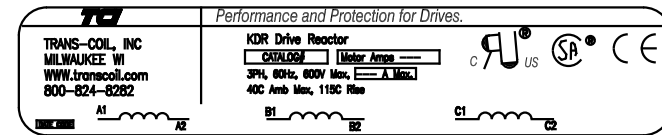
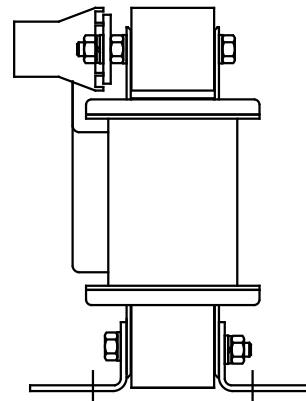
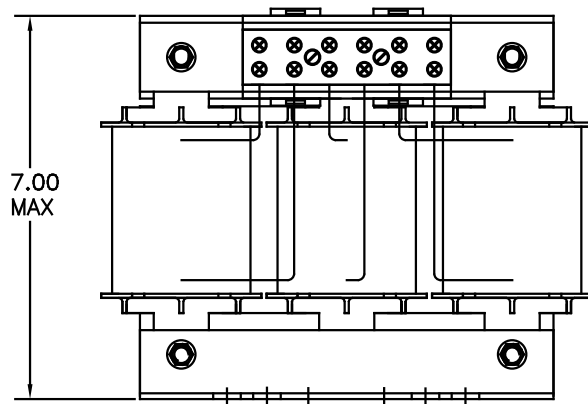


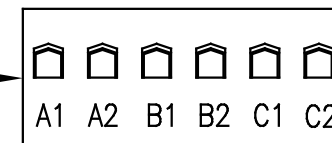
CATALOG NO	VOLTAGE	NEC MOTOR HP	NEC MOTOR CURRENT	WATTS LOSS	APPROX WT-LBS	TORQUE (LB-IN)
KDRF1P	480	50	65	SEE NOTE 1	25	SEE NOTE 2



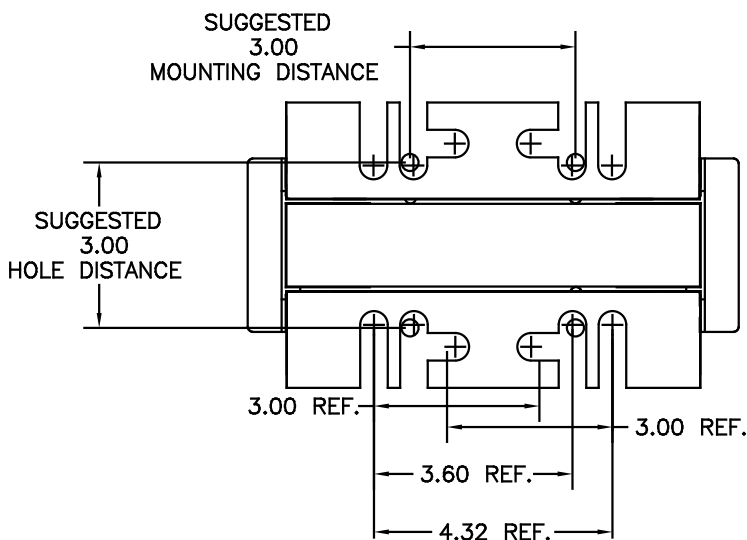
NOTE 1: WATTS LOSS WILL VARY DUE TO FUNDAMENTAL FREQUENCY, CARRIER FREQUENCY AND OTHER SYSTEM CHARACTERISTICS.
KDR DRIVE REACTORS COMPLY WITH THE THERMAL AND ALTITUDE STANDARDS SET FORTH BY NEMA ST20-1992..



NOTE: TORQUE (LB-IN) = CUSTOMER WIRE SIZE
35 = # 1 AWG THRU # 4 AWG
30 = # 6 AWG THRU #14 AWG
25 = #16 AWG THRU #22 AWG



NOTE: A1, A2, B1, B2, C1, C2, MARKINGS ON TERMINAL BLOCK FOR REFERENCE ONLY.



				TOLERANCES (UNLESS AS NOTED)	
				DECIMAL	
				.XX ±.03	
				.XXX±.01	
E ADD MARKING NOTE		11/21/00	DSW	FRACTIONAL	± 1/32
Δ 2235, MOUNTING CHG	09/15/00	DSW		ANGULAR	± 1/2°
NO	REVISION	DATE	BY	SCALE	TO FIT

TCI 7878 N. 86th STREET
MILWAUKEE, WI 53224

KDR DRIVE REACTOR
480 V, OUTPUT, "F" FRAME

DATE BY DSW 05/08/01

SOLE TO FIT

REV. NO. C KDRF1PDG

SHT. 1 OF 1