

NOTE: A1, A2, B1, B2, C1, C2, MARKINGS ON TERMINAL BLOCK FOR REFERENCE ONLY.

CATALOG NO	VOLTAGE	NEC MOTOR HP	NEC MOTOR CURRENT	WATTS LOSS	APPROX WT-LBS	TORQUE (LB-IN)
KDRE42H	575/600	30	32	140	16	20

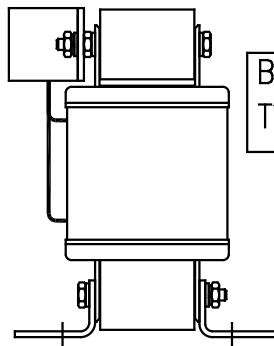
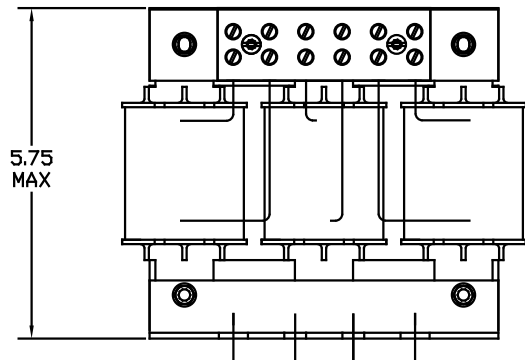
TCI Performance and Protection for Drives.

TRANS-COIL, INC
MILWAUKEE WI
WWW.transcoil.com
800-824-8282

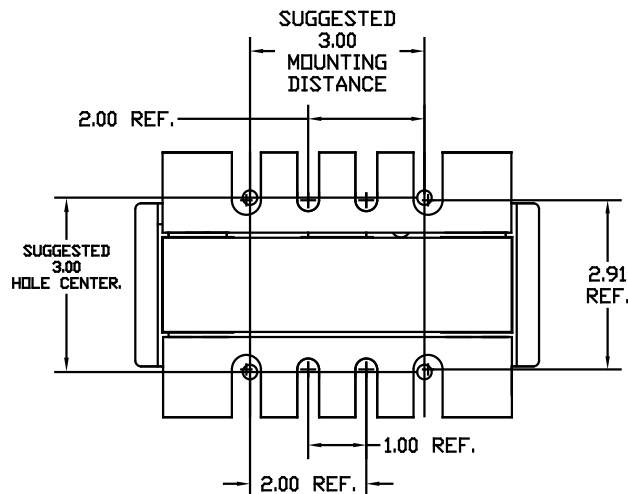
KDR Drive Reactor
CATALOG Motor Amps
3PH, 60Hz, 600V Max, A Max.
40C Amb Max, 115C Rise

RU[®] SA[®] CE

NOTE: NEC MOTOR CURRENT SHOWN ARE BASED ON HORSEPOWER AT 575 VOLTS.



Block Wire Range: #18 to #4 AWG Solid or Stranded, Copper
Tightening Torque: 20 LB-IN



				TOLERANCES EXCEPT AS NOTED:		TCI 7878 N. 86th STREET MILWAUKEE, WI 53224	
				DECIMAL	FRACTIONAL	KDR 600V SERIES, HIGH Z WIDE RANGE DRIVE REACTOR	
				.XX ± .03	± 1/32	DRAWN BY DSW DATE 02/21/03 DWG. NO. KDRE42HDG	
				.XXX ± .01	ANGULAR ± 1/2°	SCALE TO FIT APPROVAL C	
ADD MARKING NOTE	11/20/06	DSW					
2235, MOUNTING CHG	09/15/03	DSW					
NO REVISION	DATE	BY				SHT. 1 of 1	