

NOTE: A1, A2, B1, B2, C1, C2,
MARKINGS ON TERMINAL BLOCK
FOR REFERENCE ONLY.

CATALOG NO	VOLTAGE	NEC MOTOR HP	NEC MOTOR CURRENT	WATTS LOSS	APPROX WT-LBS	TORQUE (LB-IN)
KDRE2H	480	30	40	141	16	20

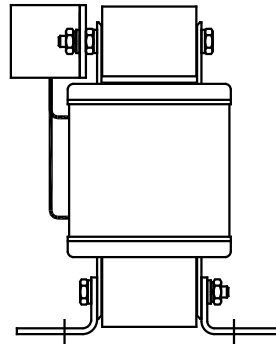
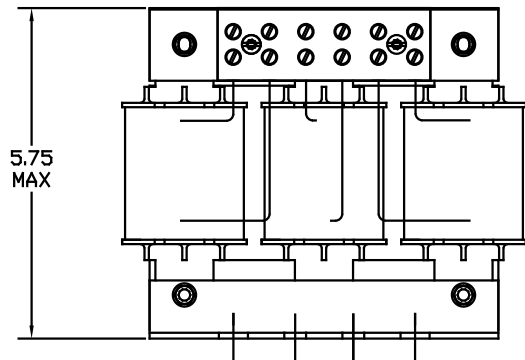
TCI Performance and Protection for Drives.

TRANS-COIL, INC
MILWAUKEE WI
WWW.transcoil.com
800-824-8282

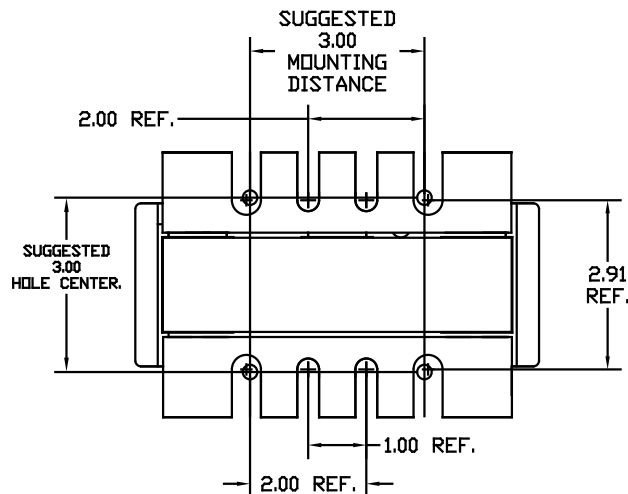
KDR Drive Reactor
CATALOG Motor Amps
3PH, 60Hz, 600V Max, A Max.
40C Amb Max, 115C Rise

RU[®] SA[®] CE

A1 A2 B1 B2 C1 C2



Block Wire Range: #18 to #4 AWG Solid or Stranded, Copper
Tightening Torque: 20 LB-IN



				TOLERANCES EXCEPT AS NOTED:		TCI 7878 N. 86th STREET MILWAUKEE, WI 53224	
				DECIMAL	FRACTIONAL	KDR DRIVE REACTOR	
				.XX ± .03	± 1/32	480 V, HIGH Z, "E" FRAME	
				.XXX ± .01	ANGULAR	DRAWN BY RJC DATE 07/30/01 DWG. NO. KDRE2HDG	
ADD MARKING NOTE				11/200/06 DSW	± 1/2*	SCALE TO FIT	
2235, MOUNTING CHG				09/15/03 DSW		SHEET 1 OF 1	
NO REVISION				DATE	BY		