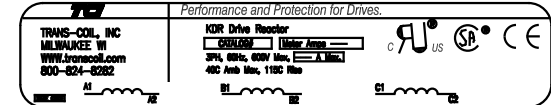
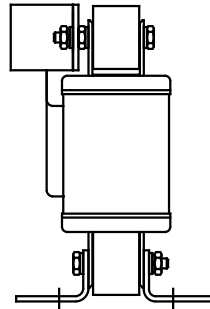
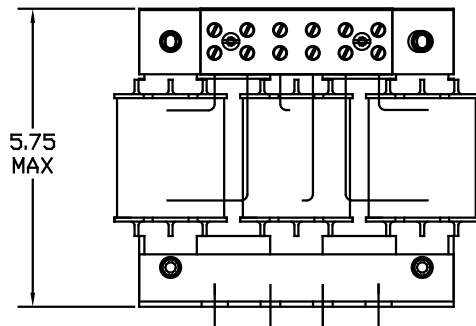


NOTE: A1, A2, B1, B2, C1, C2, MARKINGS ON TERMINAL BLOCK FOR REFERENCE ONLY.

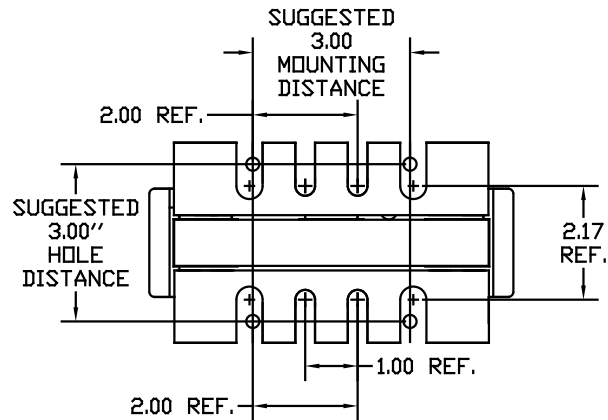
| CATALOG NO | VOLTAGE | NEC MOTOR HP | NEC MOTOR CURRENT | WATTS LOSS | APPROX WT-LBS | TORQUE (LB-IN) |
|------------|---------|--------------|-------------------|------------|---------------|----------------|
| KDRD4P | 480 | 30 | 40 | SEE NOTE 1 | 12 | 20 |



NOTE 1: WATTS LOSS WILL VARY DUE TO FUNDAMENTAL FREQUENCY, CARRIER FREQUENCY AND OTHER SYSTEM CHARACTERISTICS. KDR DRIVE REACTORS COMPLY WITH THE THERMAL AND ALTITUDE STANDARDS SET FORTH BY NEMA ST20-1992..



Block Wire Range: #18 to #4 AWG Solid or Stranded, Copper
Tightening Torque: 20 LB-IN



| | | | | TOLERANCES EXCEPT AS NOTED | 7878 N. 86th STREET MILWAUKEE, WI 53224 |
|----------------------|----------|-----|--|----------------------------|---|
| | | | | DECIMAL | |
| | | | | .XX ± .03 .XXX ± .01 | |
| ADD MARKING NOTE | 11/20/06 | DSW | | FRACTIONAL ± 1/32 | DRN BY RJC |
| 2235 MOUNTING CHANGE | 09/15/03 | DSW | | ANGULAR ± 1/2° | DATE 07/30/01 |
| NO REVISION | | | | | APPRV. B |
| | | | | | DWG. NO. B KDRD4PDG |
| | | | | | SCALE TO FIT |
| | | | | | SHT. 1 of 1 |