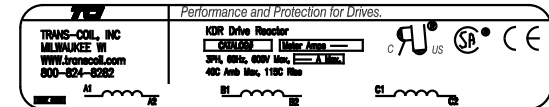
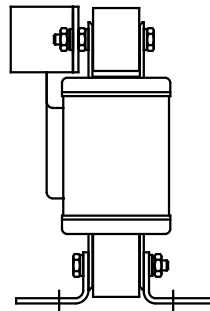
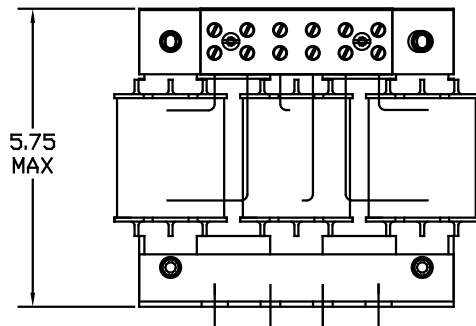


NOTE: A1, A2, B1, B2, C1, C2,  
MARKINGS ON TERMINAL BLOCK  
FOR REFERENCE ONLY.

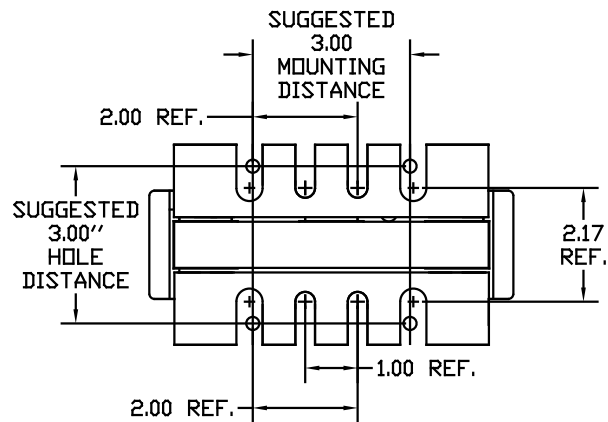
CATALOG NO	VOLTAGE	NEC MOTOR HP	NEC MOTOR CURRENT	WATTS LOSS	APPROX WT-LBS	TORQUE (LB-IN)
KDRD34P	575	40	41	SEE NOTE 1	12	20



NOTE 1: WATTS LOSS WILL VARY DUE TO FUNDAMENTAL FREQUENCY,  
CARRIER FREQUENCY AND OTHER SYSTEM CHARACTERISTICS.  
KDR DRIVE REACTORS COMPLY WITH THE THERMAL AND  
ALTITUDE STANDARDS SET FORTH BY NEMA ST20-1992..



Block Wire Range: #18 to #4 AWG Solid or Stranded, Copper  
Tightening Torque: 20 LB-IN



				TOLERANCES EXCEPT AS NOTED	<b>7878 N. 86th STREET MILWAUKEE, WI 53224</b>
				DECIMAL	
				.XX ± .03	<b>KDR DRIVE REACTOR 575V, OUTPUT, "D" FRAME</b>
				.XXX ± .01	
	ADD MARKING NOTE	11/20/06	DSW	FRACTIONAL ± 1/32	DRN BY RJC
	2235 MOUNTING CHANGE	09/15/03	DSW	ANGULAR ± 1/2°	DATE 07/30/03
NO	REVISION	DATE	BY		APPRV.
					DWG NO. <b>B KDRD34PDG</b>
					SCALE TO FIT
					SHT. 1 of 1