

NOTE: A1, A2, B1, B2, C1, C2, MARKINGS ON TERMINAL BLOCK FOR REFERENCE ONLY.

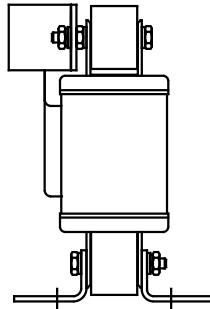
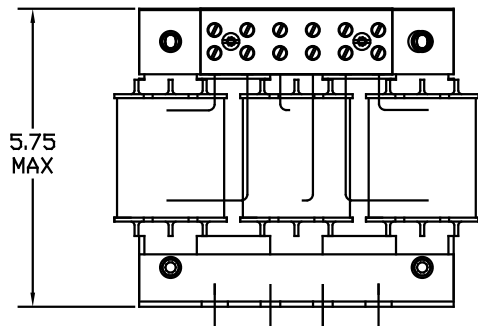
CATALOG NO	VOLTAGE	NEC MOTOR HP	NEC MOTOR CURRENT	WATTS LOSS	APPROX WT-LBS	TORQUE (LB-IN)
KDRD32P	575	20	22	SEE NOTE 1	10	20

TCI Performance and Protection for Drives.

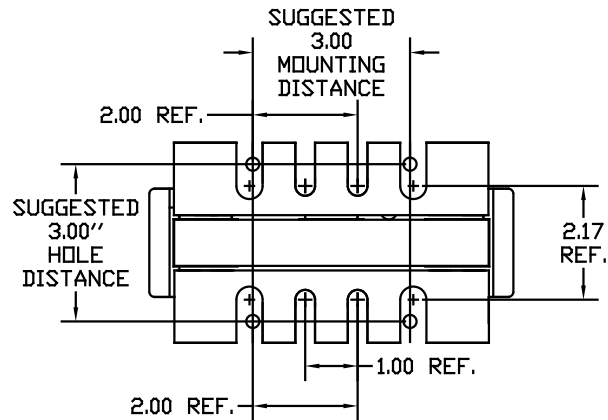
TRANS-COIL, INC. MILWAUKEE, WI WWW.transcoil.com 800-824-8282

KDR Drive Reactor 575V/20HP 3PH, 60Hz, 600V Max, 1.5A Max, 400 Amps Max, 1100 Hz

NOTE 1: WATTS LOSS WILL VARY DUE TO FUNDAMENTAL FREQUENCY, CARRIER FREQUENCY AND OTHER SYSTEM CHARACTERISTICS. KDR DRIVE REACTORS COMPLY WITH THE THERMAL AND ALTITUDE STANDARDS SET FORTH BY NEMA ST20-1992..



Block Wire Range: #18 to #4 AWG Solid or Stranded, Copper
Tightening Torque: 20 LB-IN



				TOLERANCES EXCEPT AS NOTED	TCI 7878 N. 86th STREET MILWAUKEE, WI 53224
				DECIMAL	
				.XX ± .03	KDR DRIVE REACTOR 575V, OUTPUT, "D" FRAME
				.XXX ± .01	
ADD MARKING NOTE	11/20/06	DSW		FRACTIONAL ± 1/32	DRN BY RJC DATE 07/30/03 DWG NO. B KDRD32PDG
2235 MOUNTING CHANGE	09/15/03	DSW		ANGULAR ± 1/2°	SCALE TO FIT
NO REVISION	DATE	BY			APPRV. B KDRD32PDG SHT.1 of 1