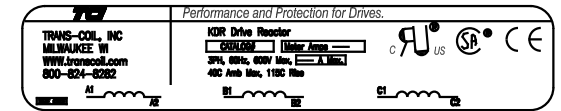
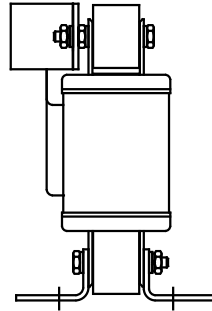
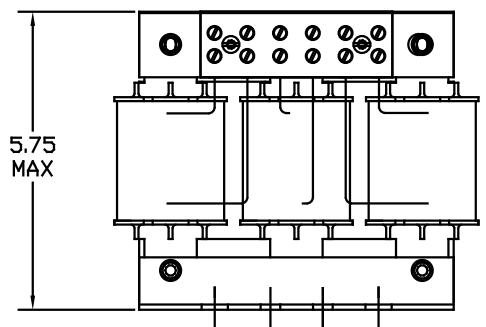


NOTE: A1, A2, B1, B2, C1, C2, MARKINGS ON TERMINAL BLOCK FOR REFERENCE ONLY.

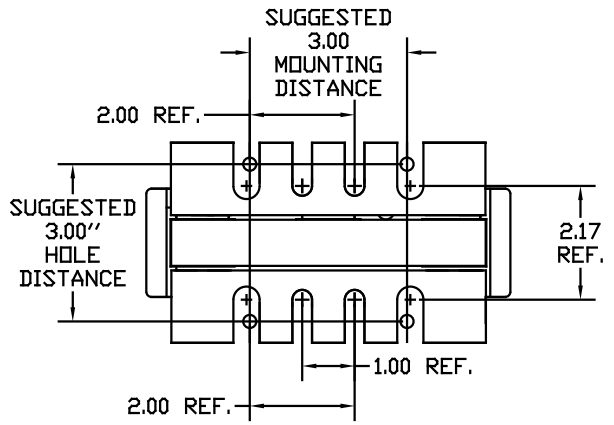
CATALOG NO	VOLTAGE	NEC MOTOR HP	NEC MOTOR CURRENT	WATTS LOSS	APPROX WT-LBS	TORQUE (LB-IN)
KDRD2P	480	20	27	SEE NOTE 1	10	20



NOTE 1: WATTS LOSS WILL VARY DUE TO FUNDAMENTAL FREQUENCY, CARRIER FREQUENCY AND OTHER SYSTEM CHARACTERISTICS. KDR DRIVE REACTORS COMPLY WITH THE THERMAL AND ALTITUDE STANDARDS SET FORTH BY NEMA ST20-1992..



Block Wire Range: #18 to #4 AWG Solid or Stranded, Copper
Tightening Torque: 20 LB-IN



				TOLERANCES EXCEPT AS NOTED	7878 N. 86th STREET MILWAUKEE, WI 53224 KDR DRIVE REACTOR 480V, OUTPUT, "D" FRAME
				DECIMAL	
				.XX ± .03 .XXX ± .01	
ADD MARKING NOTE	11/20/06	DSW		FRACTIONAL ± 1/32	DRN BY RJC DATE 07/30/03 DWG NO. B KDRD2PDG
2235 MOUNTING CHANGE	09/15/03	DSW		ANGULAR ± 1/2°	SCALE TO FIT APPROV. SHT. 1 of 1
NO	REVISION	DATE	BY		