

NOTE: A1, A2, B1, B2, C1, C2, MARKINGS ON TERMINAL BLOCK FOR REFERENCE ONLY.

CATALOG NO	VOLTAGE	NEC MOTOR HP	NEC MOTOR CURRENT	WATTS LOSS	APPROX WT-LBS	TORQUE (LB-IN)
KDRD1P	480	15	21	SEE NOTE 1	10	20

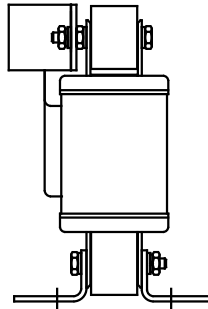
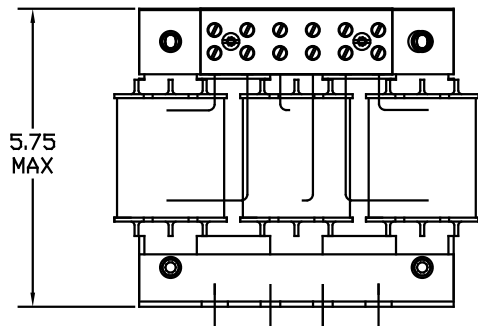
TCI Performance and Protection for Drives.

TRANS-COL, INC.
MILWAUKEE, WI
WWW.transcol.com
800-824-6262

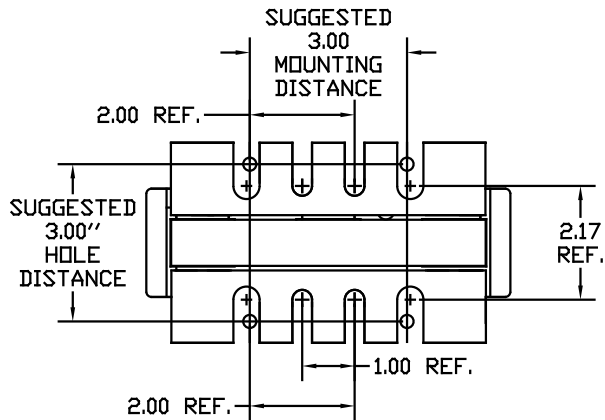
KDR Drive Reactor
480V, 60Hz, 600V Max, 15A Max.
400 Amp Max, 1100 Hz

UL US SR CE

NOTE 1: WATTS LOSS WILL VARY DUE TO FUNDAMENTAL FREQUENCY, CARRIER FREQUENCY AND OTHER SYSTEM CHARACTERISTICS.
KDR DRIVE REACTORS COMPLY WITH THE THERMAL AND ALTITUDE STANDARDS SET FORTH BY NEMA ST20-1992..



Block Wire Range: #18 to #4 AWG Solid or Stranded, Copper
Tightening Torque: 20 LB-IN



				TOLERANCES EXCEPT AS NOTED	TCI 7878 N. 86th STREET MILWAUKEE, WI 53224
				DECIMAL	
				.XX ± .03	KDR DRIVE REACTOR 480 V, OUTPUT, "D" FRAME
				.XXX ± .01	
ADD MARKING NOTE	11/20/06	DSW		FRACTIONAL ± 1/32	DRN BY RJC
2235, MOUNTING CHANGE	09/15/03	DSW		ANGULAR ± 1/2°	DATE 07/30/01
NO REVISION	DATE	BY			DWG NO. B KDRD1PDG
					SCALE TO FIT
					APPRV. B
					SHT. 1 of 1