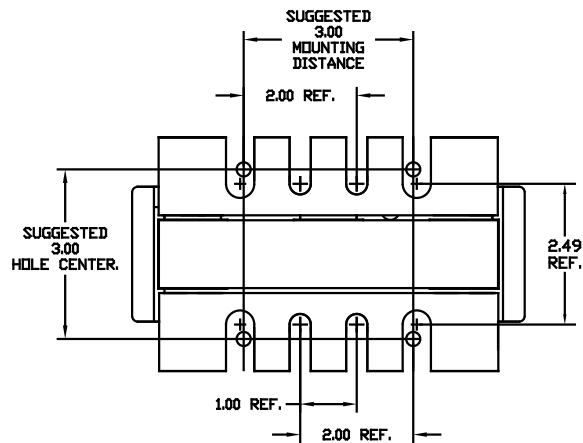
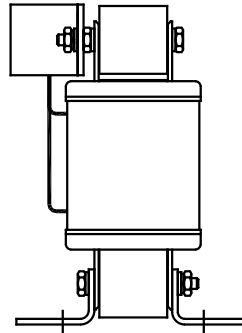
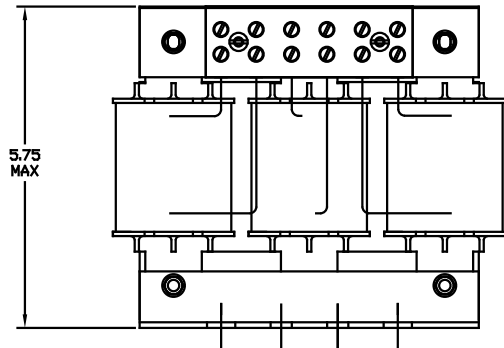


NOTE: A1, A2, B1, B2, C1, C2, MARKINGS ON TERMINAL BLOCK FOR REFERENCE ONLY.

CATALOG NO	VOLTAGE	NEC MOTOR HP	NEC MOTOR CURRENT	WATTS LOSS	APPROX WT-LBS	TORQUE (LB-IN)
KDRC44L	575/600	50	52	123	15	20

NOTE: NEC MOTOR CURRENT SHOWN ARE BASED ON HORSEPOWER AT 575 VOLTS.

Block Wire Range: #18 to #4 AWG Solid or Stranded, Copper
Tightening Torque: 20 LB-IN



				TOLERANCES EXCEPT AS NOTED	7878 N. 86th STREET MILWAUKEE, WI 53224		
				DECIMAL	KDR 600V SERIES LOW Z WIDE RANGE REACTOR		
				.XX ± .03			
				.XXX ± .01			
				FRACTIONAL	DRN BY	DATE	DWG. NO.
				± 1/32	RJC	07/30/01	B
				ANGULAR	SCALE	APPRVD.	
				± 1/2°	TO FIT		
NO	REVISION	DATE	BY		B KDRC44LDG SHT. 1 of 1		