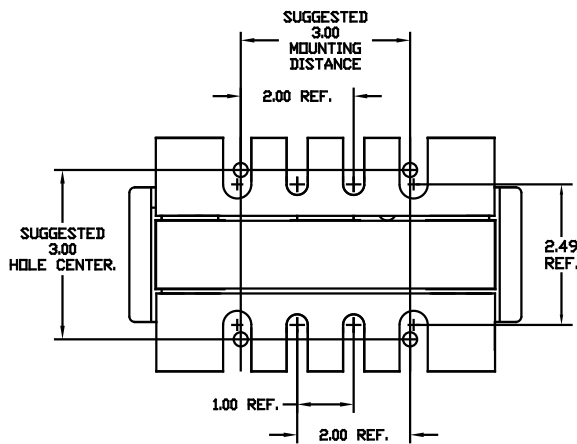
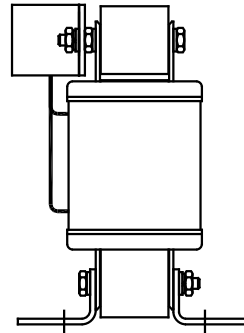
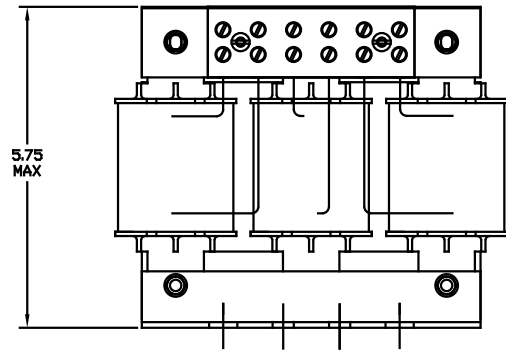


NOTE: A1, A2, B1, B2, C1, C2, MARKINGS ON TERMINAL BLOCK FOR REFERENCE ONLY.

| CATALOG NO | VOLTAGE | NEC MOTOR HP | NEC MOTOR CURRENT | WATTS LOSS | APPROX WT-LBS | TORQUE (LB-IN) |
|------------|---------|--------------|-------------------|------------|---------------|----------------|
| KDRC3H     | 480     | 20           | 27                | 108        | 15            | 20             |

Block Wire Range: #18 to #4 AWG Solid or Stranded, Copper  
Tightening Torque: 20 LB-IN



|  |                      |          |     |                            |  |
|--|----------------------|----------|-----|----------------------------|--|
|  |                      |          |     | TOLERANCES EXCEPT AS NOTED | 7878 N. 86th STREET<br>MILWAUKEE, WI 53224<br><br><b>KDR DRIVE REACTOR</b><br>480 V, HIGH Z, "C" FRAME |
|  |                      |          |     | DECIMAL                    |  |
|  |                      |          |     | .XX ± .03<br>.XXX ± .01    |  |
|  | ADD MARKING NOTE     | 11/16/06 | DSW | FRACTIONAL                 | DRN BY RJC    DATE 07/30/01    DWG. NO. B<br>SCALE TO FIT    APPRVD.    KDR3H<br>SHT. 1 of 1           |
|  | 2235 MOUNTING CHANGE | 09/15/03 | DSW | ANGULAR                    |  |
|  | REVISION             | DATE     | BY  | ± 1/2°                     |  |