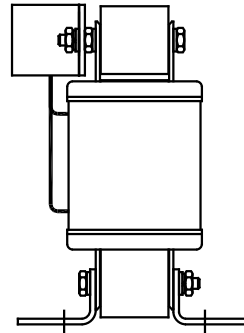
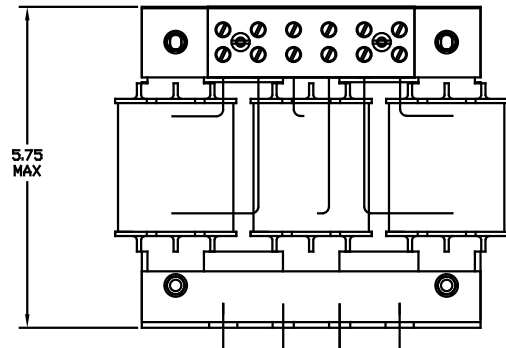


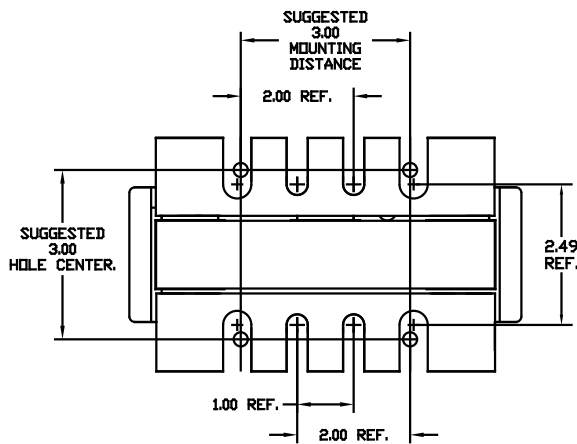
NOTE: A1, A2, B1, B2, C1, C2, MARKINGS ON TERMINAL BLOCK FOR REFERENCE ONLY.

CATALOG NO	VOLTAGE	NEC MOTOR HP	NEC MOTOR CURRENT	WATTS LOSS	APPROX WT-LBS	TORQUE (LB-IN)
KDRC31P	575	50	52	SEE NOTE 1	15	20

NOTE 1: WATTS LOSS WILL VARY DUE TO FUNDAMENTAL FREQUENCY, CARRIER FREQUENCY AND OTHER SYSTEM CHARACTERISTICS.
KDR DRIVE REACTORS COMPLY WITH THE THERMAL AND ALTITUDE STANDARDS SET FORTH BY NEMA ST20-1992..



Block Wire Range: #18 to #4 AWG Solid or Stranded, Copper
Tightening Torque: 20 LB-IN



				TOLERANCES EXCEPT AS NOTED	7878 N. 86th STREET MILWAUKEE, WI 53224 KDR DRIVE REACTOR 575 V, OUTPUT, "C" FRAME
				DECIMAL	
				.XX ± .03 .XXX ± .01	
ADD MARKING NOTE	11/16/06	DSW		FRACTIONAL	DRN BY RJC
2235 MOUNTING CHANGE	09/15/03	DSW		± 1/32	DATE 07/30/01
				ANGULAR	APPRVD.
				± 1/2°	DWG. NO. BKDRC31PDG
NO REVISION	DATE	BY		SCALE TO FIT	SHT. 1 of 1