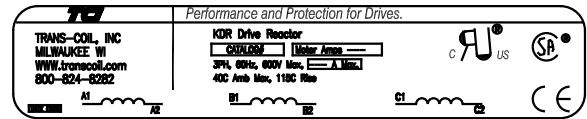
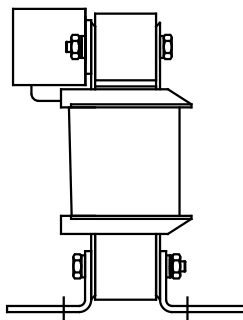
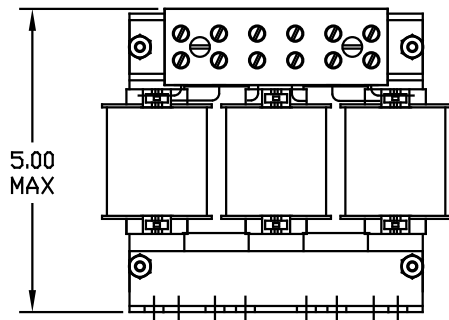


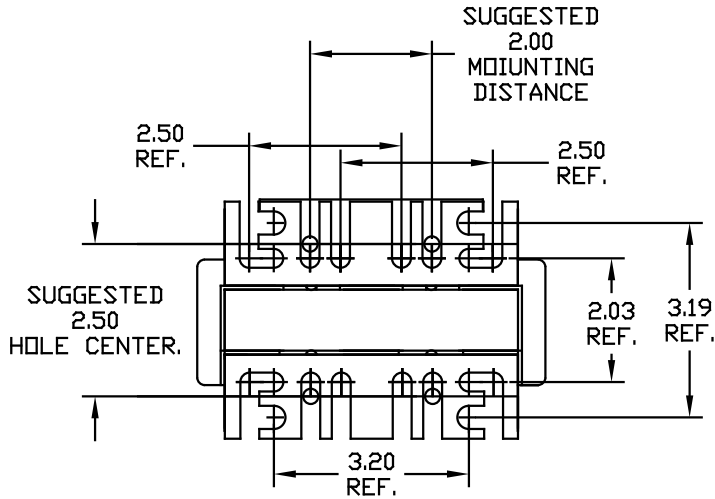
CATALOG NO	VOLTAGE	NEC MOTOR HP	NEC MOTOR CURRENT	WATTS LOSS	APPROX WT-LBS	TORQUE (LB-IN)
KDRA44L	575/600	20	22.0	71	8	20

NOTE: NEC MOTOR CURRENT SHOWN ARE BASED ON HORSEPOWER AT 575 VOLTS.

NOTE: A1, A2, B1, B2, C1, C2, MARKINGS ON TERMINAL BLOCK FOR REFERENCE ONLY.



Block Wire Range: #18 to #4 AWG Solid or Stranded, Copper
Tightening Torque: 20 LB-IN



				TOLERANCES EXCEPT AS NOTED	7878 N. 86th STREET MILWAUKEE, WI 53224
				DECIMAL	
				.XX ± .03	KDR 600V SERIES LOW Z WIDE RANGE DRIVE REACTOR
				.XXX ± .01	
ADD MARKING NOTE	11/16/06	DSW		FRACTIONAL ± 1/32	DRN BY RJC
2235 MOUNTING CHANGE	09/15/03	DSW		ANGULAR ± 1/2°	DATE 07/27/01
NO REVISION	DATE	BY			APPRVD.
					DWG. NO. BKDRB44LDG SCALE TO FIT SHT. 1 of 1