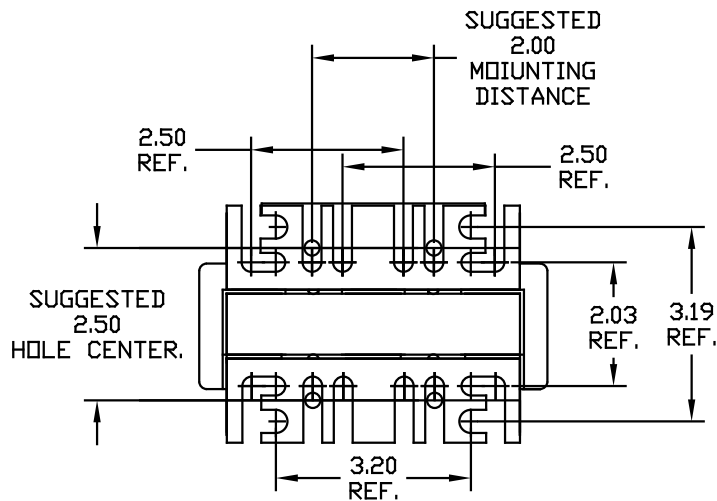
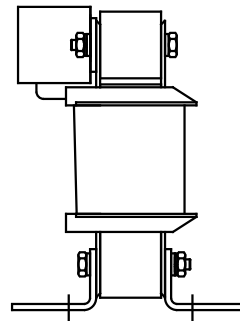
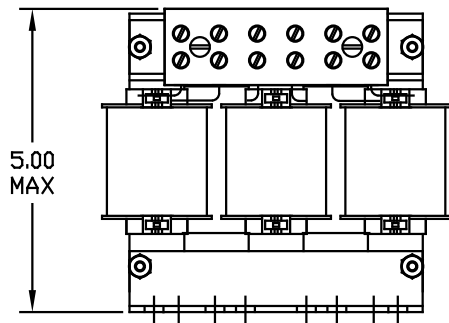
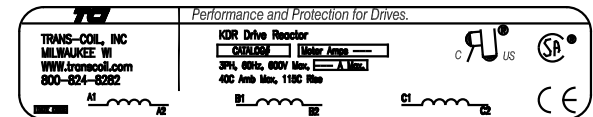


NOTE: A1, A2, B1, B2, C1, C2, MARKINGS ON TERMINAL BLOCK FOR REFERENCE ONLY.



CATALOG NO	VOLTAGE	NEC MOTOR HP	NEC MOTOR CURRENT	WATTS LOSS	APPROX WT-LBS	TORQUE (LB-IN)
KDRB43L	575/600	25	27.0	77	8	20

NOTE: NEC MOTOR CURRENT SHOWN ARE BASED ON HORSEPOWER AT 575 VOLTS.



Block Wire Range: #18 to #4 AWG Solid or Stranded, Copper
Tightening Torque: 20 LB-IN

				TOLERANCES EXCEPT AS NOTED	TCI 7878 N. 86th STREET MILWAUKEE, WI 53224	
				DECIMAL	KDR 600V SERIES LOW Z WIDE RANGE DRIVE REACTOR	
				.XX ± .03		
				.XXX ± .01		
ADD MARKING NOTE	11/16/06	DSW		FRACTIONAL ± 1/32	DRN BY RJC	DATE 07/27/01
2235 MOUNTING CHANGE	09/15/03	DSW		ANGULAR ± 1/2°	SCALE TO FIT	APPRVD.
NO REVISION	DATE	BY				DWG NO. BKDRB43LDG SHT. 1 of 1