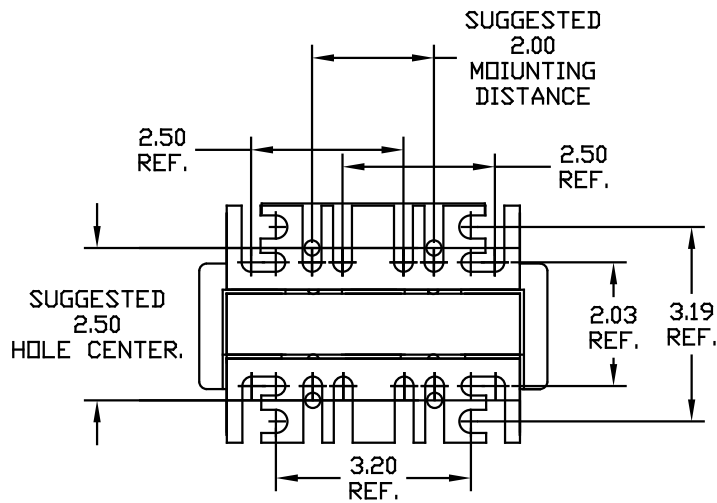
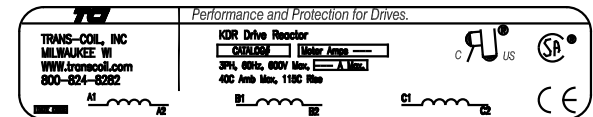
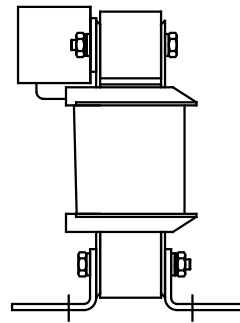
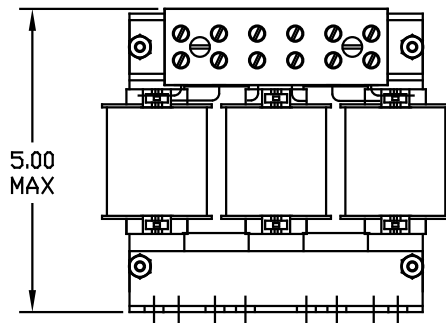


NOTE: A1, A2, B1, B2, C1, C2, MARKINGS ON TERMINAL BLOCK FOR REFERENCE ONLY.

CATALOG NO	VOLTAGE	NEC MOTOR HP	NEC MOTOR CURRENT	WATTS LOSS	APPROX WT-LBS	TORQUE (LB-IN)
KDRB2L	480	15	21	65	8	20

Block Wire Range: #18 to #4 AWG Solid or Stranded, Copper
Tightening Torque: 20 LB-IN



				TOLERANCES EXCEPT AS NOTED
				DECIMAL
				.XX ± .03
				.XXX ± .01
ADD MARKING NOTE	11/16/06	DSW	FRACTIONAL ± 1/32	
2235 MOUNTING CHANGE	09/15/03	DSW	ANGULAR ± 1/2°	
NO	REVISION	DATE	BY	

TCI 7878 N. 86th STREET
MILWAUKEE, WI 53224

KDR DRIVE REACTOR
480 V, LOW Z, "B" FRAME

DRN BY: RJC DATE: 07/27/01 DWG NO: BKDRB2LDG
SCALE: TO FIT APPRVD: SHT. 1 OF 1