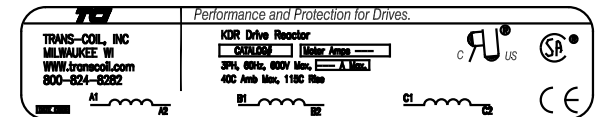
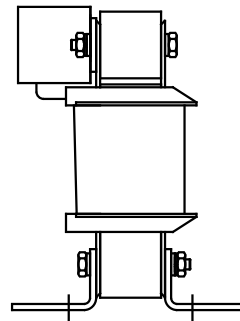
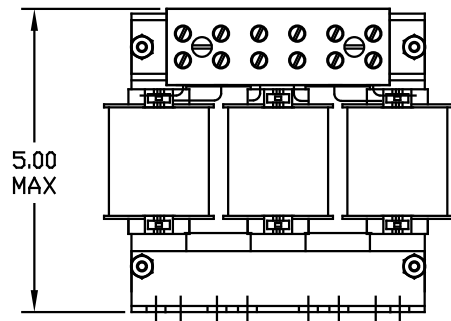


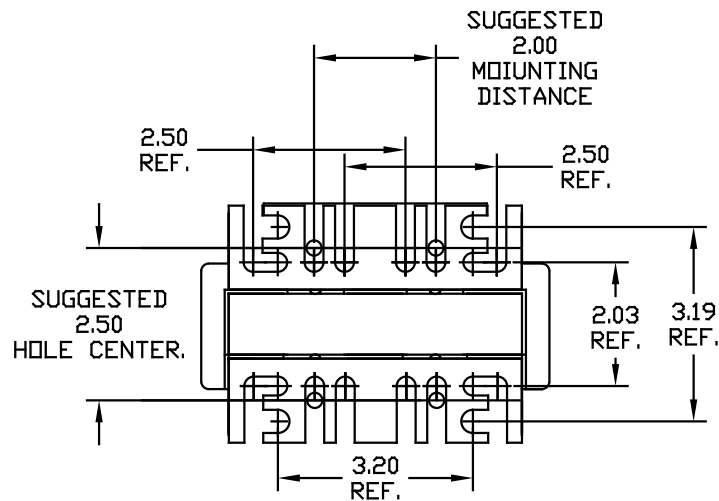
CATALOG NO	VOLTAGE	NEC MOTOR HP	NEC MOTOR CURRENT	WATTS LOSS	APPROX WT-LBS	TORQUE (LB-IN)
KDRB26H	208/240	7.5	24.2	67	8	20

NOTE: NEC MOTOR CURRENT SHOWN ARE BASED ON HORSEPOWER AT 208 VOLTS.

NOTE: A1, A2, B1, B2, C1, C2, MARKINGS ON TERMINAL BLOCK FOR REFERENCE ONLY.



Block Wire Range: #18 to #4 AWG Solid or Stranded, Copper  
Tightening Torque: 20 LB-IN



				TOLERANCES EXCEPT AS NOTED	7878 N. 86th STREET MILWAUKEE, WI 53224
				DECIMAL	
				.XX ± .03	<b>KDR 200V SERIES, HIGH Z WIDE RANGE DRIVE REACTOR</b>
				.XXX ± .01	
				FRACTIONAL ± 1/32	
ADD MARKING NOTE	11/16/06	DSW		ANGULAR ± 1/2°	DRN BY: RJC DATE: 07/27/01 SCALE: TO FIT
2235 MOUNTING CHANGE	09/15/03	DSW			DWG. NO.: BKDRB26H DG SHT. 1 of 1
NO	REVISION	DATE	BY		