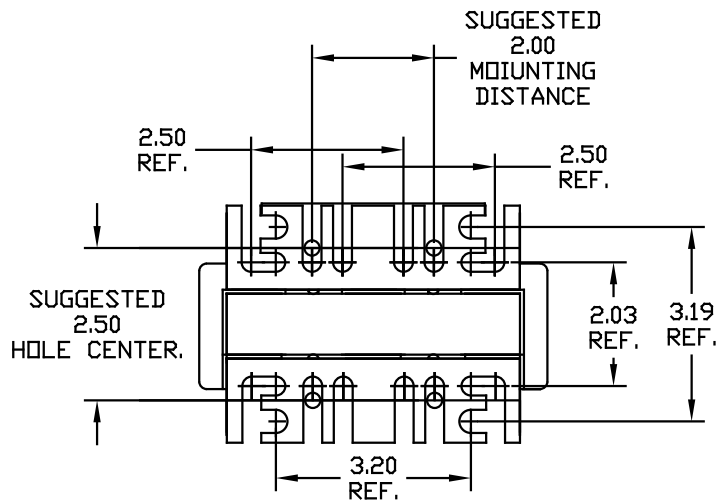
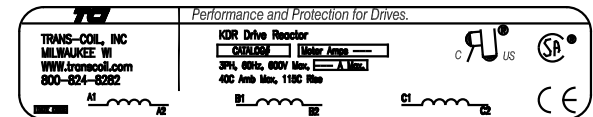
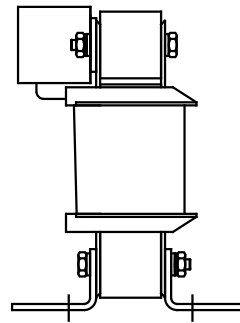
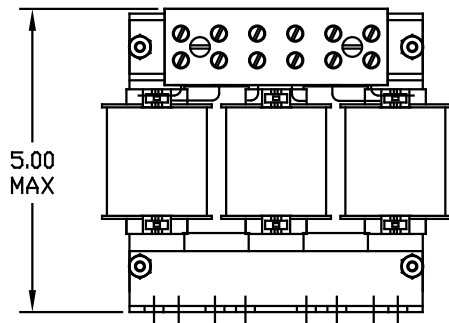


NOTE: A1, A2, B1, B2, C1, C2, MARKINGS ON TERMINAL BLOCK FOR REFERENCE ONLY.

CATALOG NO	VOLTAGE	NEC MOTOR HP	NEC MOTOR CURRENT	WATTS LOSS	APPROX WT-LBS	TORQUE (LB-IN)
KDRB1P	480	10	14	SEE NOTE 1	7	20

NOTE 1: WATTS LOSS WILL VARY DUE TO FUNDAMENTAL FREQUENCY, CARRIER FREQUENCY AND OTHER SYSTEM CHARACTERISTICS.

KDR DRIVE REACTORS COMPLY WITH THE THERMAL AND ALTITUDE STANDARDS SET FORTH BY NEMA ST20-1992..



Block Wire Range: #18 to #4 AWG Solid or Stranded, Copper  
Tightening Torque: 20 LB-IN

				TOLERANCES EXCEPT AS NOTED	7878 N. 86th STREET MILWAUKEE, WI 53224
				DECIMAL	
				.XX ± .03	KDR DRIVE REACTOR 480 V, OUTPUT, "B" FRAME
				.XXX ± .01	
ADD MARKING NOTE	11/16/06	DSW		FRACTIONAL ± 1/32	DRN BY RJC    DATE 07/27/01    DWG. NO. B KDRB1PDG
2235 MOUNTING CHANGE	09/15/03	DSW		ANGULAR ± 1/2°	
NO REVISION	DATE	BY			SCALE TO FIT    APPRVD.    SHT. 1 of 1