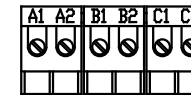
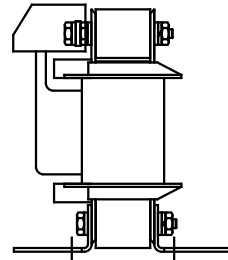
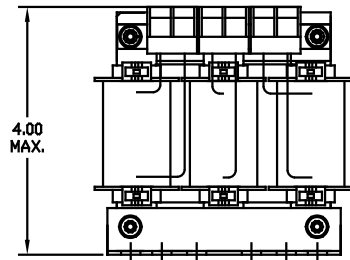


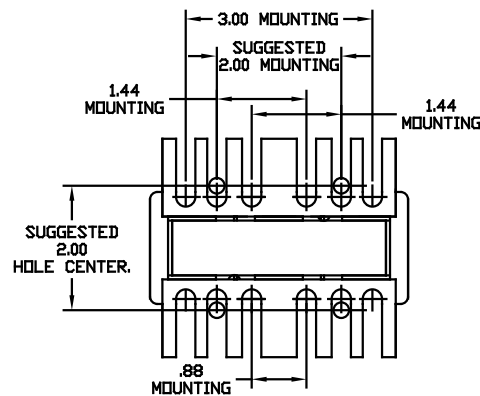
| CATALOG NO | VOLTAGE | NEC MOTOR HP | NEC MOTOR CURRENT | WATTS LOSS | APPROX WT-LBS | TORQUE (LB-IN) |
|------------|---------|--------------|-------------------|------------|---------------|----------------|
| KDRA49L    | 575/600 | 10           | 11                | 44         | 4             | 10             |

NOTE: NEC MOTOR CURRENT SHOWN ARE BASED ON HORSEPOWER AT 575 VOLTS.



NOTE: A1, A2, B1, B2, C1, C2, MARKINGS ON TERMINAL BLOCK FOR REFERENCE ONLY.

|   |                         |
|---|-------------------------|
| BLOCK WIRE RANGE FOR REACTOR AND TIGHTENING TORQUE. | #12-#18 AWG<br>10 LB-IN |
|---|-------------------------|



|                      |          |     |  |                                    |  |
|----------------------|----------|-----|--|------------------------------------|--|
|                      |          |     |  | TOLERANCES EXCEPT AS NOTED         | 7878 N. 86th STREET MILWAUKEE, WI 53224  |
|                      |          |     |  | DECIMAL<br>.XX ± .03<br>.XXX ± .01 |  |
| ADD MARKING NOTE     | 11/16/06 | DSW |  | FRACTIONAL<br>± 1/32               | KDR 600V SERIES LOW Z WIDE RANGE DRIVE REACTOR<br>DRN BY DSW DATE 02/20/03 DWG NO. B KDRA49LDG<br>SCALE TO FIT APPRVD. |
| 2235 MOUNTING CHANGE | 09/15/03 | DSW |  | ANGULAR<br>± 1/2°                  |  |
| NO REVISION          | DATE     | BY  |  |                                    | SHT. 1 of 1  |