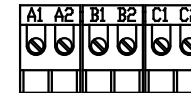
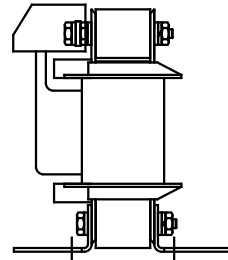
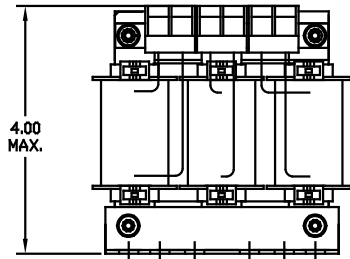


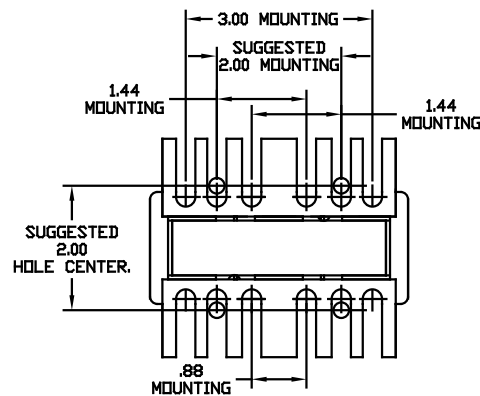
CATALOG NO	VOLTAGE	NEC MOTOR HP	NEC MOTOR CURRENT	WATTS LOSS	APPROX WT-LBS	TORQUE (LB-IN)
KDRA48L	575/600	7.5	9.0	43	4	10

NOTE: NEC MOTOR CURRENT SHOWN ARE BASED ON HORSEPOWER AT 575 VOLTS.



NOTE: A1, A2, B1, B2, C1, C2, MARKINGS ON TERMINAL BLOCK FOR REFERENCE ONLY.

BLOCK WIRE RANGE FOR REACTOR AND TIGHTENING TORQUE.	#12-#18 AWG 10 LB-IN
---	-------------------------



				TOLERANCES EXCEPT AS NOTED	7878 N. 86th STREET MILWAUKEE, WI 53224	
				DECIMAL	KDR 600V SERIES LOW Z WIDE RANGE DRIVE REACTOR DRN BY DSW DATE 02/20/03 DWG NO. KDRA48LDG SCALE TO FIT APPROV. B SHT. 1 of 1	
				.XX ± .03		
				.XXX ± .01		
ADD MARKING NOTE	11/16/06	DSW		FRACTIONAL ± 1/32		
2235 MOUNTING CHANGE	09/15/03	DSW		ANGULAR ± 1/2°		
NO	REVISION	DATE	BY			