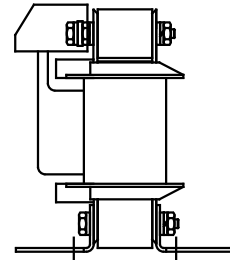
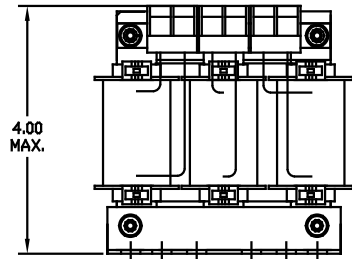
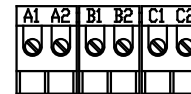


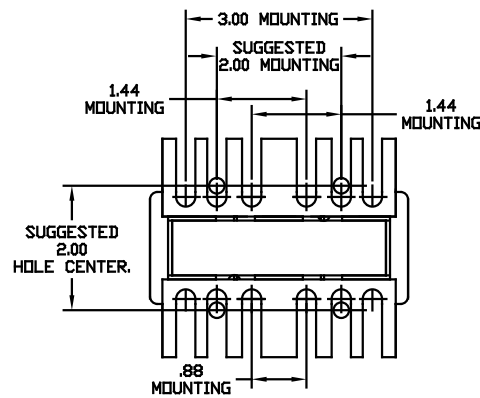
CATALOG NO	VOLTAGE	NEC MOTOR HP	NEC MOTOR CURRENT	WATTS LOSS	APPROX WT-LBS	TORQUE (LB-IN)
KDRA35P	575	3	3.9	SEE NOTE 1	4	10

NOTE 1: WATTS LOSS WILL VARY DUE TO FUNDAMENTAL FREQUENCY, CARRIER FREQUENCY AND OTHER SYSTEM CHARACTERISTICS. KDR DRIVE REACTORS COMPLY WITH THE THERMAL AND ALTITUDE STANDARDS SET FORTH BY NEMA ST20-1992..



NOTE: A1, A2, B1, B2, C1, C2, MARKINGS ON TERMINAL BLOCK FOR REFERENCE ONLY.

BLOCK WIRE RANGE	#12-#18 AWG
FOR REACTOR AND TIGHTENING TORQUE.	10 LB-IN



				TOLERANCES EXCEPT AS NOTED	7878 N. 86th STREET MILWAUKEE, WI 53224 KDR DRIVE REACTOR 575V, OUTPUT, FRAME A		
				DECIMAL			
				.XX ± .03 .XXX ± .01			
ADD MARKING NOTE	11/15/06	DSW		FRACTIONAL ± 1/32	DRN BY RJC	DATE 07/26/01	DWG NO BKDRA35PDG
2235 MOUNTING CHANGE	09/15/03	DSW		ANGULAR ± 1/2°	SCALE TO FIT	APPRV	D
NO	REVISION	DATE	BY				SHT. 1 of 1