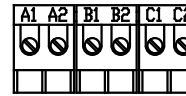
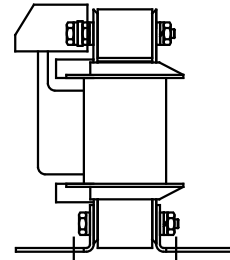
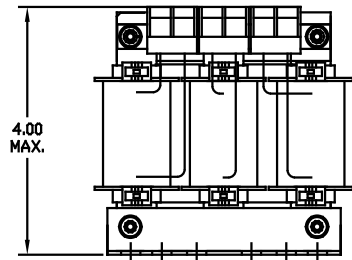


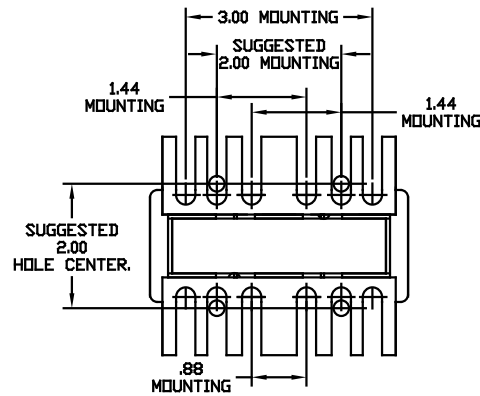
CATALOG NO	VOLTAGE	NEC MOTOR HP	NEC MOTOR CURRENT	WATTS LOSS	APPROX WT-LBS	TORQUE (LB-IN)
KDRA33P	575	5	6.1	SEE NOTE 1	4	10

NOTE 1: WATTS LOSS WILL VARY DUE TO FUNDAMENTAL FREQUENCY, CARRIER FREQUENCY AND OTHER SYSTEM CHARACTERISTICS. KDR DRIVE REACTORS COMPLY WITH THE THERMAL AND ALTITUDE STANDARDS SET FORTH BY NEMA ST20-1992..



NOTE: A1, A2, B1, B2, C1, C2, MARKINGS ON TERMINAL BLOCK FOR REFERENCE ONLY.

BLOCK WIRE RANGE FOR REACTOR AND TIGHTENING TORQUE.	#12-#18 AWG 10 LB-IN
---	-------------------------



				TOLERANCES EXCEPT AS NOTED	7878 N. 86th STREET MILWAUKEE, WI 53224	
				DECIMAL		
				.XX ± .03	KDR DRIVE REACTOR 575V, OUTPUT, FRAME A	
				.XXX ± .01		
ADD MARKING NOTE	11/15/06	DSW		FRACTIONAL ± 1/32	DRN BY	RJC
2235 MOUNTING CHANGE	09/15/03	DSW		ANGULAR ± 1/2°	DATE	07/26/01
NO REVISION					APPRV.	
					DWG NO.	BKDRA33PDG
					SCALE	TO FIT
						SHT. 1 of 1