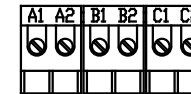
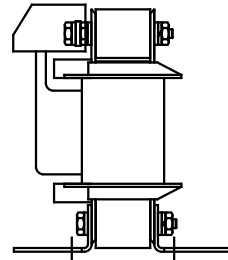
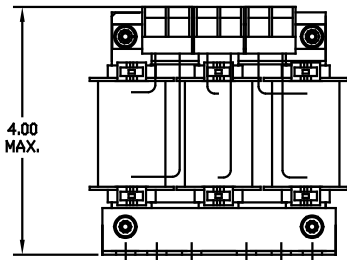


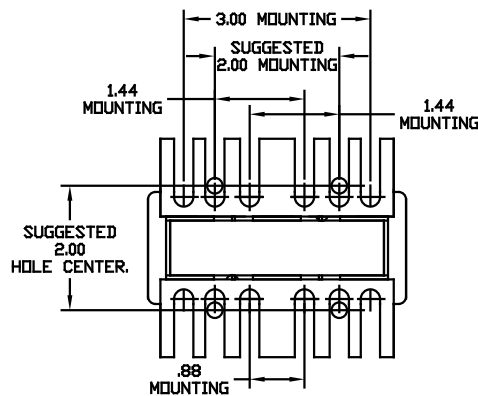
CATALOG NO	VOLTAGE	NEC MOTOR HP	NEC MOTOR CURRENT	WATTS LOSS	APPROX WT-LBS	TORQUE (LB-IN)
KDRA28L	208/240	3.0	10.6	29	4	10

NOTE: NEC MOTOR CURRENT SHOWN ARE BASED ON HORSEPOWER AT 208 VOLTS.



NOTE: A1, A2, B1, B2, C1, C2, MARKINGS ON TERMINAL BLOCK FOR REFERENCE ONLY.

BLOCK WIRE RANGE FOR REACTOR AND TIGHTENING TORQUE.	#12-#18 AWG 10 LB-IN
---	-------------------------



				TOLERANCES EXCEPT AS NOTED	7878 N. 86th STREET MILWAUKEE, WI 53224 <b>KDR 200V SERIES LOW Z WIDE RANGE DRIVE REACTOR</b>
				DECIMAL .XX ± .03 .XXX ± .01	
ADD MARKING NOTE	11/15/06	DSW		FRACTIONAL ± 1/32	
2235 MOUNTING CHANGE	09/15/03	DSW		ANGULAR ± 1/2°	DRN BY RJC    DATE 07/26/01    DWG NO. B SCALE TO FIT    APPROV.    KDRA28LDG
NO	REVISION	DATE	BY		SHT. 1 of 1