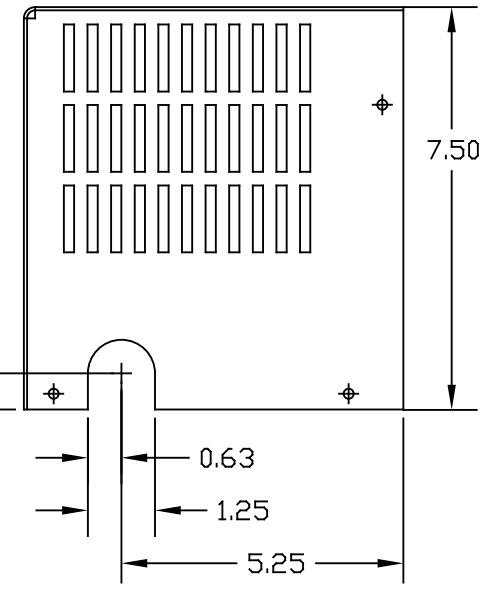
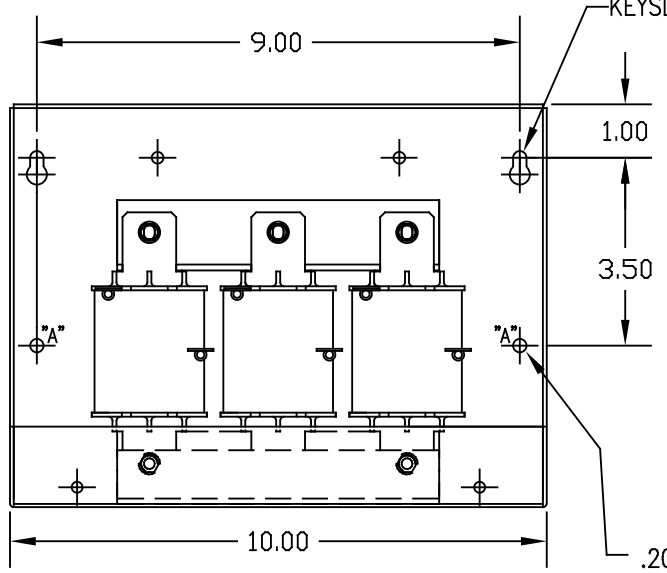
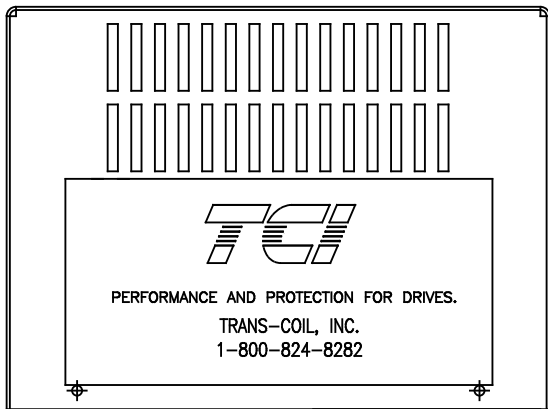


.187 DIA HOLE  
(4 PLACES)

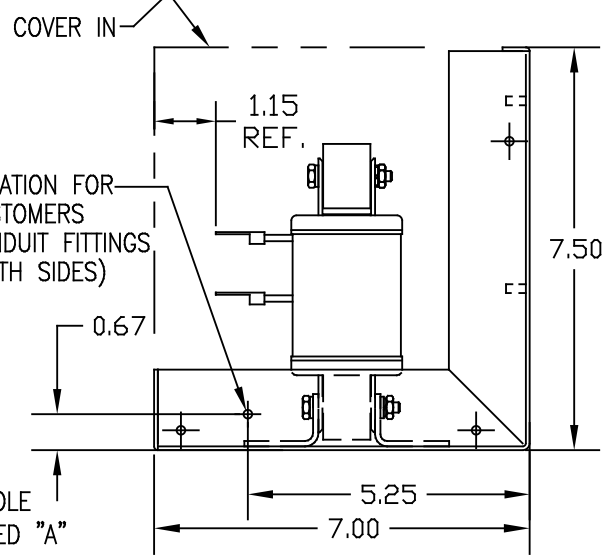


**TCI** PERFORMANCE AND PROTECTION FOR DRIVES.  
 TRANS-COIL, INC. MILWAUKEE, WI  
 WWW.transcoil.com 800-824-8282  
 KDR Drive Reactor CATALOG# MOTOR HP AMPS  
 3PH, 50/60Hz, 690V Max, A Max, ReHS  
 DATE CODE



KEYSLOT FOR #10 SCREW  
(2 PLACES)  
COVER IN

LOCATION FOR CUSTOMERS  
CONDUIT FITTINGS  
(BOTH SIDES)



.203 DIA HOLE  
(2 PLACES) MARKED "A"

CUSTOMER IS RESPONSIBLE FOR INSTALLATION  
TO MEET ALL NATIONAL AND LOCAL ELECTRICAL CODES.

VOLTAGE	NEC MOTOR HP	CATALOG NO	MOTOR HP AMPS	AMPS MAX	APPROX WT-LBS	TERMINAL HOLE SIZE
690V	25	KDRD35PC2V	27	27	16	.25

TOLERANCES EXCEPT AS NOTED			7878 N. 86th STREET MILWAUKEE, WI 53224 <b>KDR OUTPUT REACTORS 690V (FRAME D) NEMA 1</b>	
DECIMAL	XX ± .03	XXX ± .010		
FRACTIONAL	± 1/16			
ANGULAR	± 1/2°			
NO	REVISION	DATE	BY	7878 N. 86th STREET MILWAUKEE, WI 53224 KDRD35PC2VDG SHT.1 OF 1