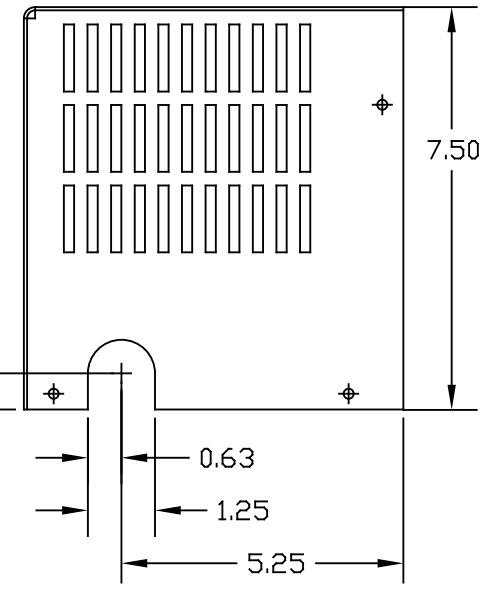


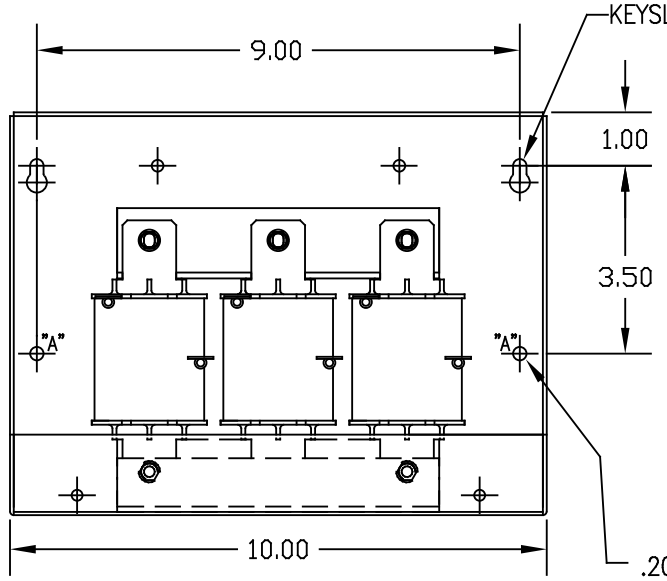
.187 DIA HOLE
(4 PLACES)



TCI PERFORMANCE AND PROTECTION FOR DRIVES.
 TRANS-COIL, INC. MILWAUKEE, WI
 WWW.TRANS-COIL.COM
 800-824-8282
 DATE CODE

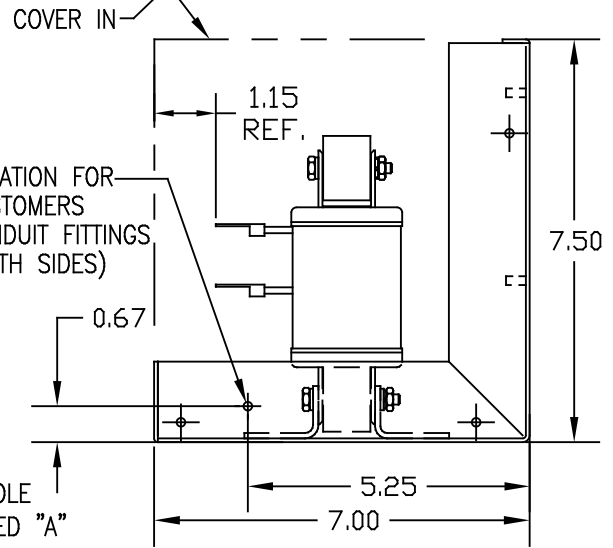
KDR Drive Reactor
 CATALOG # MOTOR HP AMPS
 3PH, 50/60Hz, 690V Max, A Max, RthS

TCI
 PERFORMANCE AND PROTECTION FOR DRIVES.
 TRANS-COIL, INC.
 1-800-824-8282



KEYSLOT FOR #10 SCREW
(2 PLACES)
COVER IN

LOCATION FOR CUSTOMERS
CONDUIT FITTINGS
(BOTH SIDES)



.203 DIA HOLE
(2 PLACES) MARKED "A"

CUSTOMER IS RESPONSIBLE FOR INSTALLATION
TO MEET ALL NATIONAL AND LOCAL ELECTRICAL CODES.

VOLTAGE	NEC MOTOR HP	CATALOG NO	MOTOR HP AMPS	AMPS MAX	APPROX WT-LBS	TERMINAL HOLE SIZE
690V	40	KDRD34PC2V	41	45	18	.313

NO	REVISION	DATE	BY

TCI 7878 N. 86th STREET MILWAUKEE, WI 53224

KDR OUTPUT REACTORS 690V (FRAME D) NEMA 1

DRN BY DSW DATE 03/27/07 DWG. NO. C KDRD34PC2VDG
 SCALE TO FIT APPRVD SHT. 1 OF 1

TOLERANCES EXCEPT AS NOTED

DECIMAL	XX ± .03
	XXX ± .010
FRACTIONAL	± 1/16
ANGULAR	± 1/2°