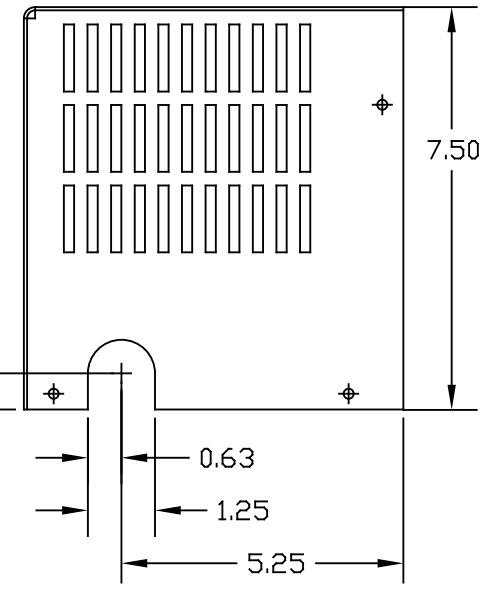
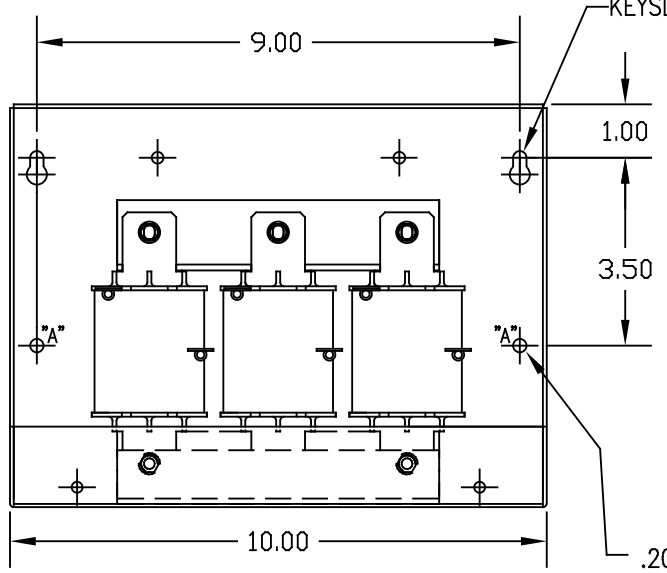
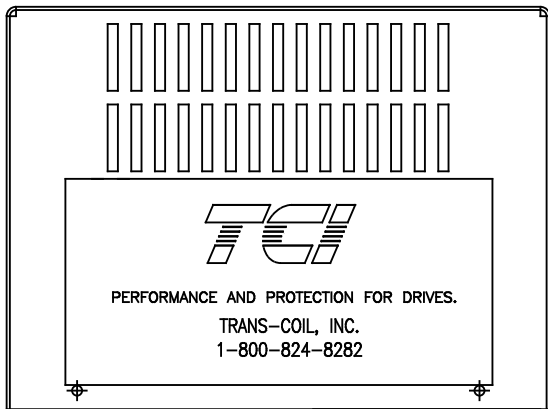


.187 DIA HOLE
(4 PLACES)

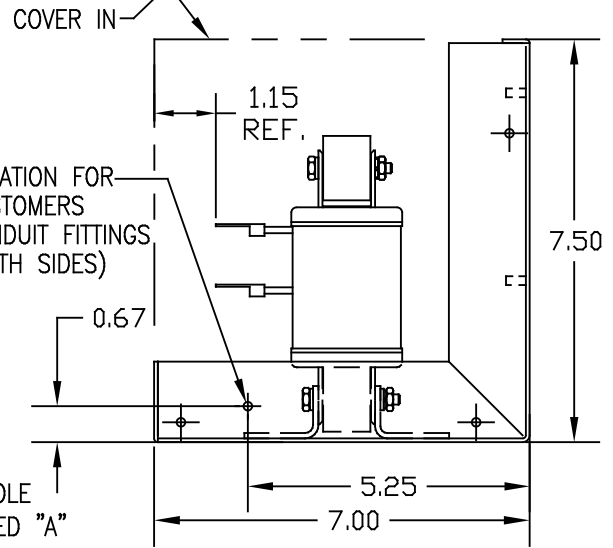


TCI PERFORMANCE AND PROTECTION FOR DRIVES.
 TRANS-COIL, INC. MILWAUKEE, WI
 WWW.transcoil.com 800-824-8282
 KDR Drive Reactor CATALOG# MOTOR HP AMPS
 3PH, 50/60Hz, 690V Max, A Max, ReHS
 DATE CODE



KEYSLOT FOR #10 SCREW
(2 PLACES)
COVER IN

LOCATION FOR CUSTOMERS
CONDUIT FITTINGS
(BOTH SIDES)



.203 DIA HOLE
(2 PLACES) MARKED "A"

CUSTOMER IS RESPONSIBLE FOR INSTALLATION
TO MEET ALL NATIONAL AND LOCAL ELECTRICAL CODES.

VOLTAGE	NEC MOTOR HP	CATALOG NO	MOTOR HP AMPS	AMPS MAX	APPROX WT-LBS	TERMINAL HOLE SIZE
690V	30	KDRD33PC2V	32	35	18	.25

NO	REVISION	DATE	BY

TCI 7878 N. 86th STREET MILWAUKEE, WI 53224
 KDR OUTPUT REACTORS 690V (FRAME D) NEMA 1
 TOLERANCES EXCEPT AS NOTED
 DECIMAL XX ± .03 XXX ± .010
 FRACTIONAL ± 1/16
 ANGULAR ± 1/2°
 DRN BY DSW DATE 03/27/07 DWG. NO. C KDRD33PC2VDG
 SCALE TO FIT APPRVL SHT.1 OF 1