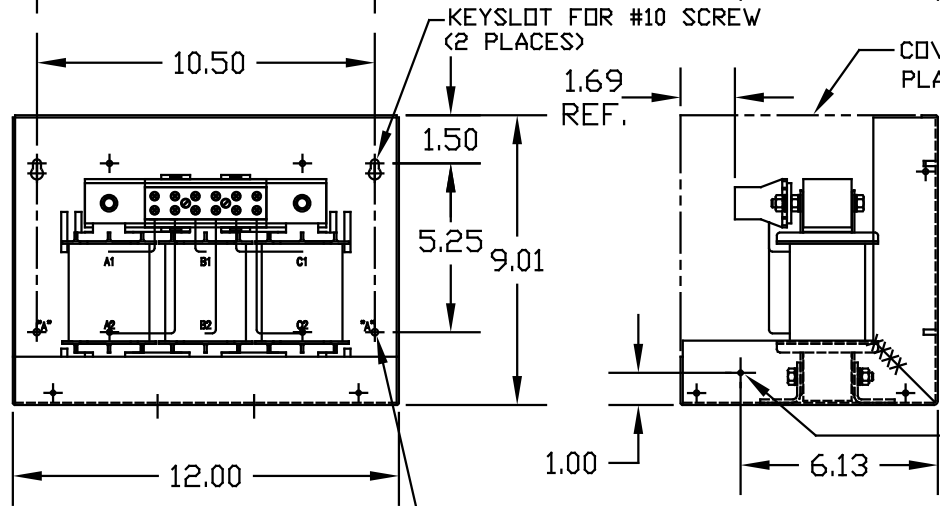


COVER-CAB 3
TCI P/N 17136



BASE-CAB 3
TCI P/N 17135

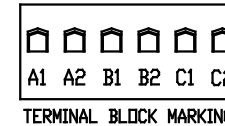
.203 DIA HOLE
(2 PLACES) MARKED "A"

CATALOG NO	VOLTAGE	NEC MOTOR HP	NEC MOTOR CURRENT	WATTS LOSS	APPROX. WEIGHT-LBS
KDRF2LC3	480	50	65.0	114	37
KDRF4LC3	480	60	77.0	169	37
KDRF4HC3	480	40	52.0	169	37
KDRF1HC3	480	50	65.0	191	37
KDRF2HC3	480	60	77.0	226	37
KDRF1PC3	480	50	65.0	NOTE 1	37
KDRF2PC3	480	60	77.0	NOTE 1	37
KDRF31PC3	575	60	62.0	NOTE 1	37
KDRF32PC3	575	75	77.0	NOTE 1	37

TORQUE(LB-IN)=CUSTOMER WIRE
35=1 AWG THRU 4 AWG
30=6 AWG THRU 14 AWG
25=16 AWG THRU 20 AWG
20= 22 AWG

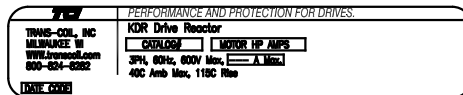
NOTE 1: WATTS LOSS WILL VARY DUE TO FUNDAMENTAL FREQUENCY, CARRIER FREQUENCY AND OTHER SYSTEM CHARACTERISTICS.

KDR DRIVE REACTORS COMPLY WITH THE THERMAL AND ALTITUDE STANDARDS SET FORTH BY NEMA ST20-1992.



NOTE: A1, A2, B1, B2, C1, C2, MARKINGS ON COIL AND TERMINAL BLOCK FOR REFERENCE ONLY.

CUSTOMER IS RESPONSIBLE FOR INSTALLATION TO MEET ALL NATIONAL AND LOCAL ELECTRICAL CODES.



ENCLOSURE LABEL PLACED ON FRONT COVER.

NO	REVISION	DATE	BY	TOLERANCES EXCEPT AS NOTED
C	2604 MARK REF.	4/17/09	DSW	.XX ± .03
B	2235 REACTOR MTG	09/15/03	DW	.XXX ± .01
A	ADDED KDRF4HC3	7/17/01	RJC	FRACTIONAL ± 1/32
				ANGULAR ± 1/2°

TCI 7878 N. 86th STREET
MILWAUKEE, WI 53224

KDR ASSEMBLY, "F" FRAME
"C3" ENCL., INPUT & OUTPUT

DRN BY	RJC	DATE	5/29/01	DWG. NO.	KDR-6DG
SCALE	1/4"=1"	APPRV.			SHT. 1 OF 1