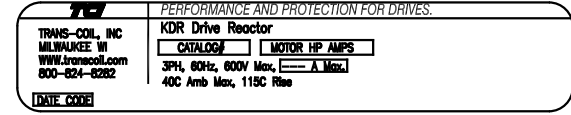


CATALOG NO	VOLTAGE	NEC MOTOR HP	NEC MOTOR CURRENT	WATTS LOSS	APPRX. WEIGHT-LBS	TORQUE (LB-IN)
KDRD1LC2	480	25	34.0	96	16	20
KDRD2LC2	480	30	40.0	105	16	20
KDRD1PC2	480	15	21.0	NOTE 1	16	20
KDRD2PC2	480	20	27.0	NOTE 1	16	20
KDRD3PC2	480	25	34.0	NOTE 1	18	20
KDRD4PC2	480	30	40.0	NOTE 1	18	20
KDRD31PC2	575	15	17.0	NOTE 1	16	20
KDRD32PC2	575	20	22.0	NOTE 1	16	20
KDRD35PC2	575	25	27.0	NOTE 1	16	20
KDRD33PC2	575	30	32.0	NOTE 1	18	20
KDRD34PC2	575	40	41.0	NOTE 1	18	20

NOTE 1: WATTS LOSS WILL VARY DUE TO FUNDAMENTAL FREQUENCY, CARRIER FREQUENCY AND OTHER SYSTEM CHARACTERISTICS. KDR DRIVE REACTORS COMPLY WITH THE THERMAL AND ALTITUDE STANDARDS SET FORTH BY NEMA ST20-1992.

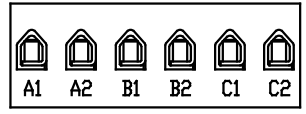
Block Wire Range: #18 to #4 AWG Solid or Stranded, Copper
Tightening Torque: 20 LB-IN



ENCLOSURE LABEL PLACED ON FRONT COVER.

CUSTOMER IS RESPONSIBLE FOR INSTALLATION TO MEET ALL NATIONAL AND LOCAL ELECTRICAL CODES.

NOTE: A1, A2, B1, B2, C1, C2, MARKINGS ON COIL AND TERMINAL BLOCK FOR REFERENCE ONLY.



TERMINAL BLOCK MARKING

NO	REVISION	DATE	BY	TOLERANCES EXCEPT AS NOTED
C	2604 MARK REF	4/17/09	DSW	DECIMAL .XX ± .03 .XXX ± .01
B	2294 50 TO 34 AMPS	03/01/04	DSW	FRACTIONAL ± 1/32
A	2235, REACTOR MTG	09/15/03	DSW	ANGULAR ± 1/2°

TCI 7878 N. 86th STREET MILWAUKEE, WI 53224

KDR ASSEMBLY, "D" FRAME "C2" ENCL., INPUT & OUTPUT

DRN BY RJC DATE 5/29/01 DWG NO B KDR-4DG
SCALE 3/8"=1" APPRVD SHT.1 OF 1