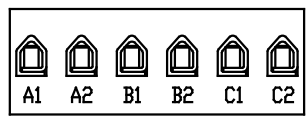
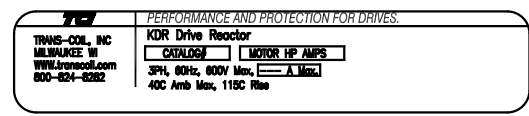
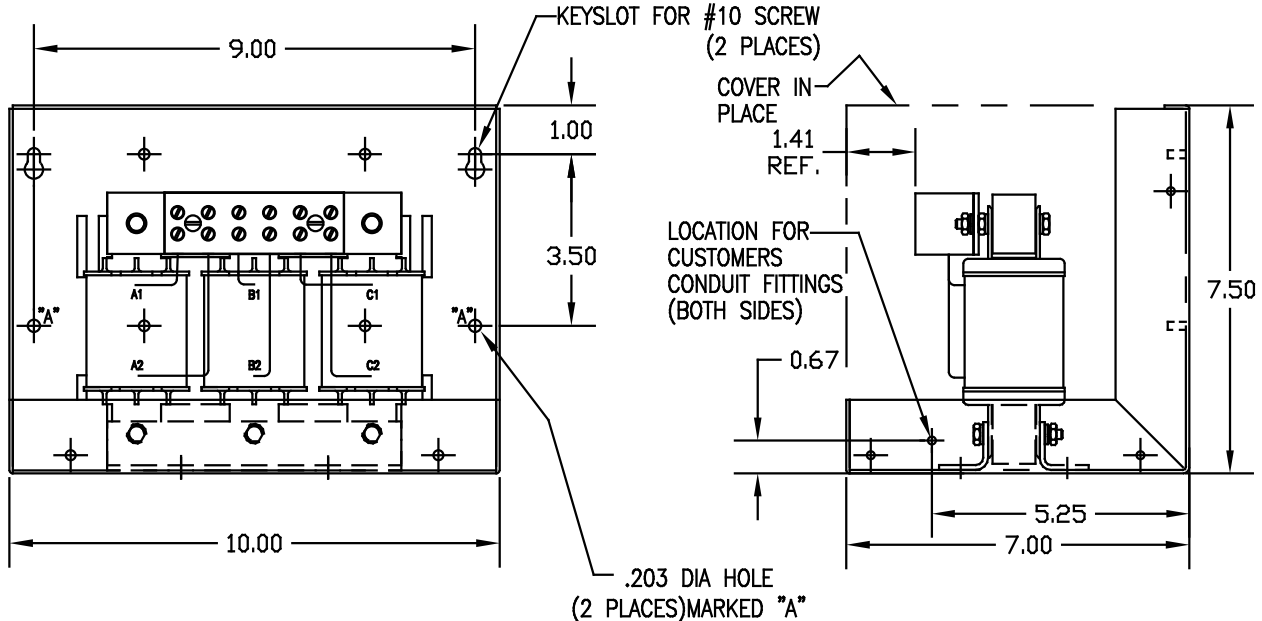


CATALOG NO	VOLTAGE	NEC MOTOR HP	NEC MOTOR CURRENT	WATTS LOSS	APPROX. WEIGHT-LBS	TERMINAL BLOCK TORQUE (LB-IND)
KDRD25LC2	208/240	10	30.8	64	18	20
KDRD24LC2	208/240	15	46.2	85	18	20
KDRD26LC2	208/240	20	59.4	94	18	20
KDRD21HC2	208/240	10	30.8	91.8	18	20
KDRD22HC2	208/240	15	46.2	108	18	20
KDRD42LC2	575/600	40	41	109	18	20
KDRD41HC2	575/600	25	27	107	18	20

NEC MOTOR CURRENTS SHOWN IN THE 208/240 VOLT CHART ARE BASED ON HORSE POWERS AT 208 VOLT. 575/600 VOLT CHART USE THE 575 VOLT CURRENT RATING.



TERMINAL BLOCK MARKING



ENCLOSURE LABEL PLACED IN FRONT COVER.

NOTE: A1, A2, B1, B2, C1, C2, MARKINGS ON COIL AND TERMINAL BLOCK FOR REFERENCE ONLY.

CUSTOMER IS RESPONSIBLE FOR INSTALLATION TO MEET ALL NATIONAL AND LOCAL ELECTRICAL CODES.

		TOLERANCES EXCEPT AS NOTED:		7878 N. 86th STREET MILWAUKEE, WI 53224
		DECIMAL: .XX ± .03 .XXX ± .01 FRACTIONAL: ± 1/32 ANGULAR: ± 1/2°		
2604 MARK REF.	4/17/09	DSW	DATE	KDR (FRAME D) ENCLOSED WIDE RANGE REACTOR DSW 02/25/03 C KDR-34DG SCALE 1/2 APPROVAL SH. 1 OF 1
NO	REVISION	DATE	BY	