



ENCLOSURE LABEL PLACED ON FRONT COVER.

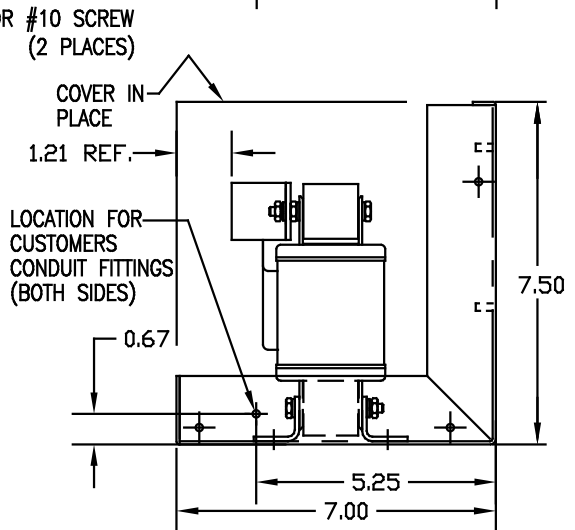
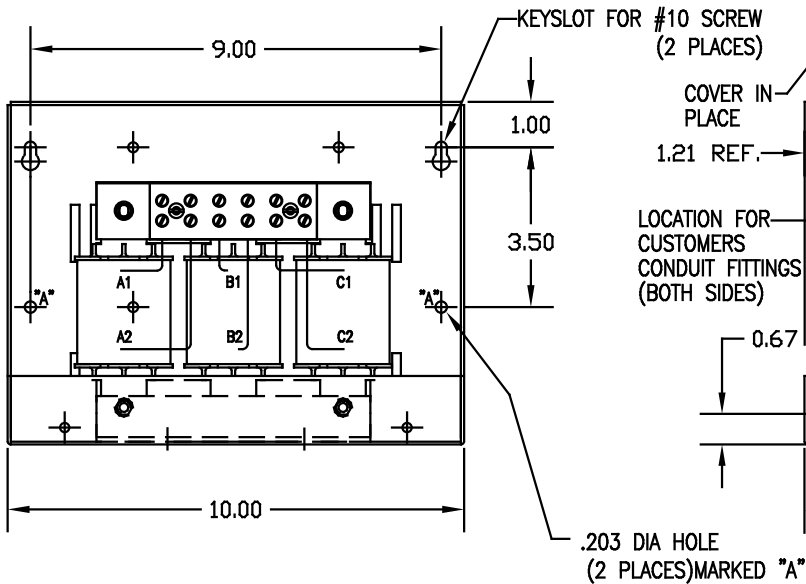
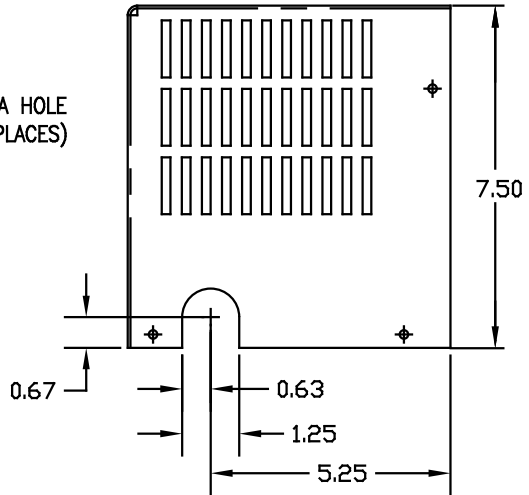
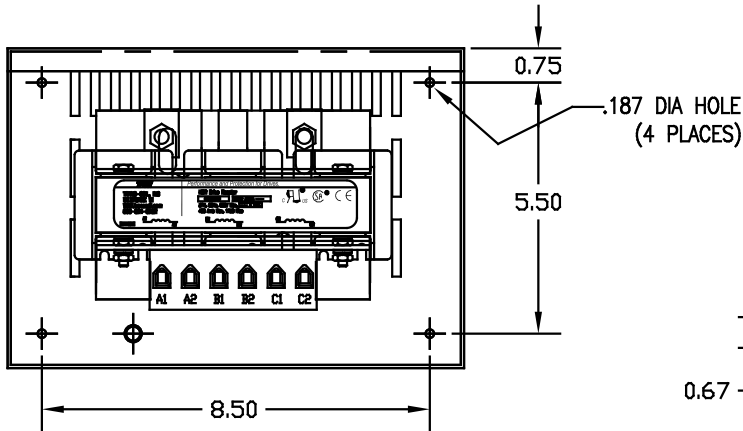
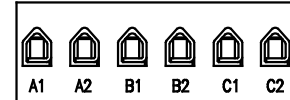
HP	CATALOG NO	240V MOTOR AMPS	AMPS MAX	TERMINAL BLOCK TORQUE	APPROX WT-LBS
----	------------	-----------------	----------	-----------------------	---------------

200V SERIES LOW	25	KDRC22LC2	65.0	80.0	SEE BELOW	21
200V SERIES HIGH	20	KDRC22HC2	51.8	62.0	20 LB-IN	21

HP	CATALOG NO	575V MOTOR AMPS	AMPS MAX	TERMINAL BLOCK TORQUE	APPROX WT-LBS
----	------------	-----------------	----------	-----------------------	---------------

600V SERIES LOW	40	KDRC43LC2	41.0	41.0	20 LB-IN	21
	50	KDRC44LC2	52.0	52.0	20 LB-IN	21
600V SERIES HIGH	25	KDRC43HC2	27.0	30.0	20 LB-IN	21

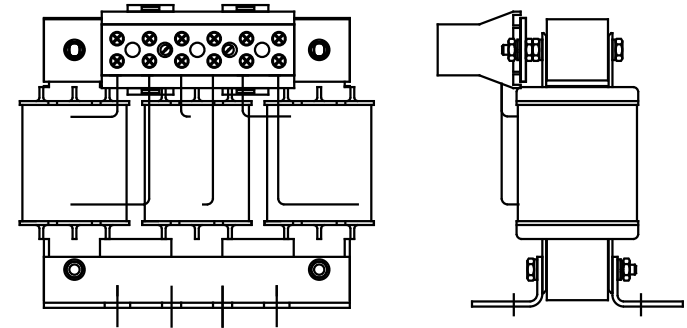
TERMINAL BLOCK MARKING.



** KDRC22LC2 TORQUE FOR TERMINAL BLOCK.

TORQUE(LB-IN)=CUSTOMER WIRE

- 35=1 AWG THRU 4 AWG
- 30=6 AWG THRU 14 AWG
- 25=16 AWG THRU 20 AWG
- 20=22 AWG



CUSTOMER IS RESPONSIBLE FOR INSTALLATION TO MEET ALL NATIONAL AND LOCAL ELECTRICAL CODES.

NOTE: A1, A2, B1, B2, C1, C2, MARKINGS ON COIL AND TERMINAL BLOCK FOR REFERENCE ONLY.

				TOLERANCES EXCEPT AS NOTED		TGI 7878 N. 86th STREET MILWAUKEE, WI 53224
				DECIMAL	FRACTIONAL	
				XX ± .03	± 1/32	KDR (FRAME C) ENCLOSED WIDE RANGE REACTOR
				.XXX ± .01	ANGULAR ± 1/2°	
2604	ADD MARK REF.	4/17/09	DSW	DATE	02/25/03	KDR-33DG
2512	C22L TBLC CHG.	08/21/07	DSW	SCALE	1/2	
NO	REVISION	DATE	BY	SCALE	1/2	SHT. 1 OF 1