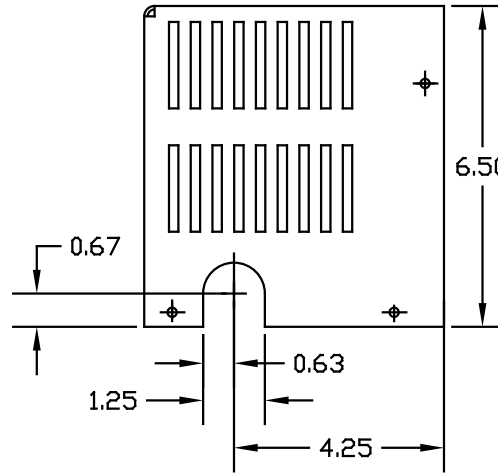
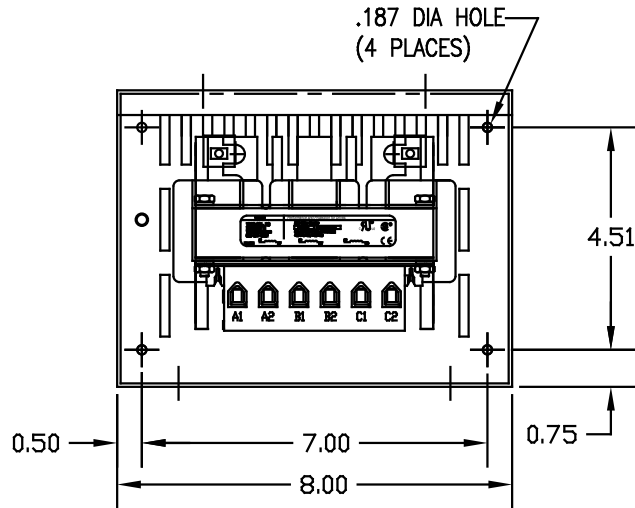


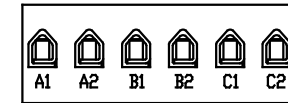
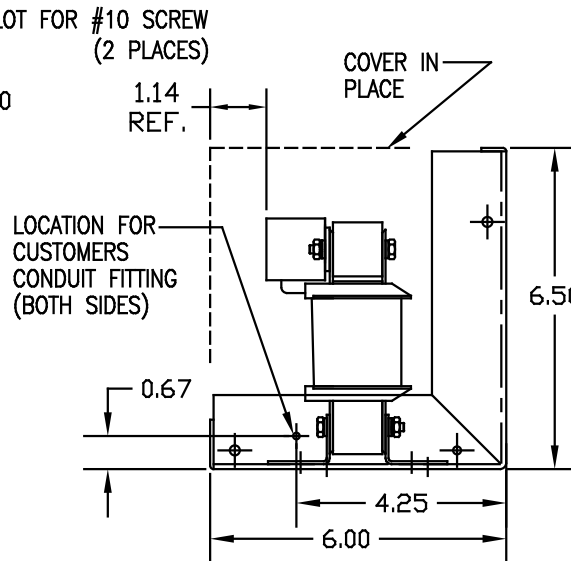
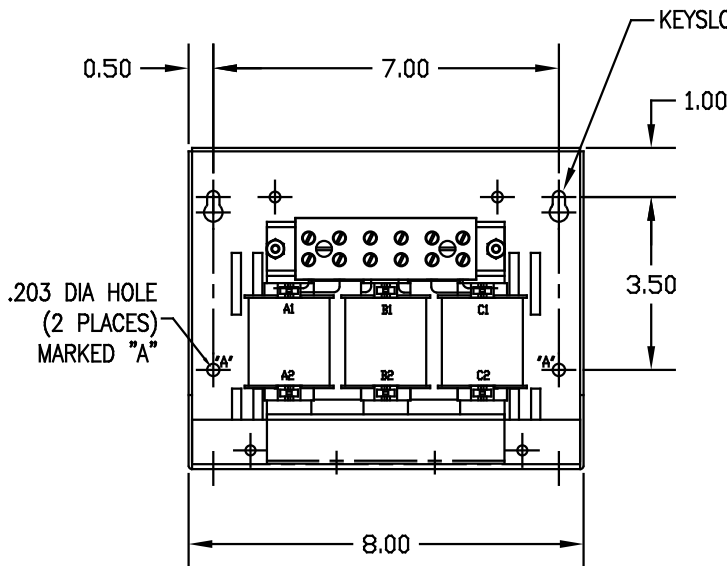
ENCLOSURE LABEL PLACED ON FRONT COVER.

CATALOG NO	VOLTAGE	NEC MOTOR HP	NEC MOTOR CURRENT	WATTS LOSS	APPROX. WEIGHT-LBS	TERMINAL BLOCK TORQUE (L.B-IN)
KDRB22LC1	208/240	5.0	16.7	48	12	20
KDRB25HC1	208/240	5.0	16.7	53.1	12	20
KDRB26HC1	208/240	7.5	24.2	66.5	12	20
KDRB45LC1	575/600	15	17	66.2	12	20
KDRB44LC1	575/600	20	22	71.2	12	20
KDRB43LC1	575/600	25	27	76.7	12	20

NEC MOTOR CURRENTS SHOWN IN THE 208/240 VOLT CHART ARE BASED ON HORSE POWERS AT 208 VOLT. 575/600 VOLT CHART USE THE 575 VOLT CURRENT RATING.



NOTE: A1, A2, B1, B2, C1, C2, MARKINGS ON COIL AND TERMINAL BLOCK FOR REFERENCE ONLY.



TERMINAL BLOCK MARKING

CUSTOMER IS RESPONSIBLE FOR INSTALLATION TO MEET ALL NATIONAL AND LOCAL ELECTRICAL CODES.

TOLERANCES EXCEPT AS NOTED:			TOLERANCES EXCEPT AS NOTED:	TOLERANCES EXCEPT AS NOTED:	TOLERANCES EXCEPT AS NOTED:
LINEAR	ANGULAR	FRACTURAL			
			XX ± .01		
			.XXX ± .005		
			± 1/32		
			± 1/2°		
2604 MARKING REF	4/17/09	DSW			
NO	REVISION	DATE	BY		

7878 N. 86th STREET
MILWAUKEE, WI 53224

**KDR (FRAME B) ENCLOSED
WIDE RANGE REACTOR**

DATE: 02/25/03
SCALE: 1/2
DRAWN BY: DSW
APPROVED BY: [Signature]
KDR-32DG
SHT. 1 OF 1