

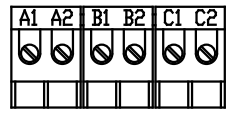
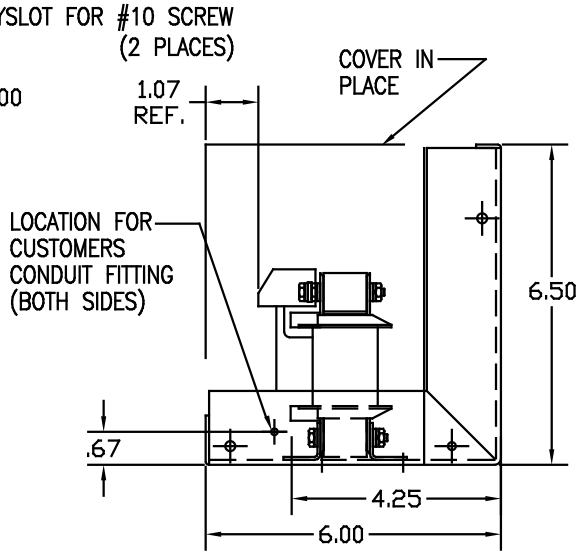
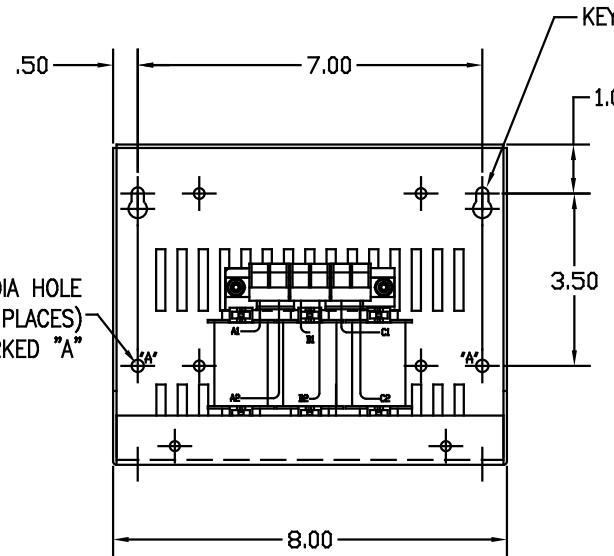
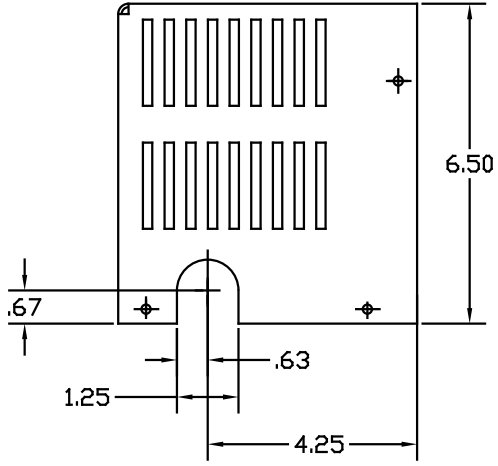
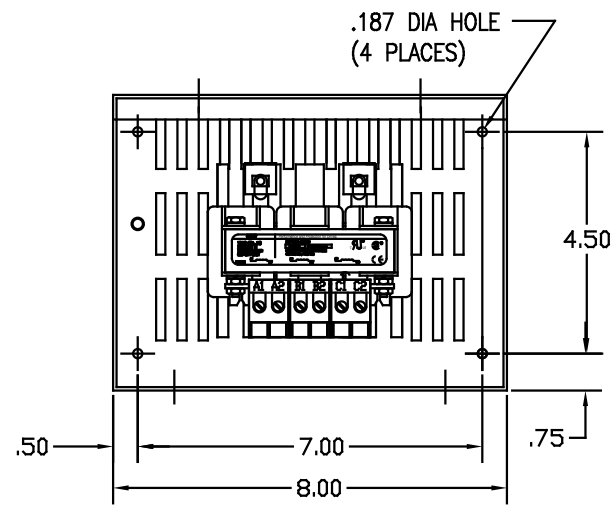


ENCLOSURE LABEL PLACED ON FRONT COVER

CATALOG NO	VOLTAGE	NEC MOTOR HP	NEC MOTOR CURRENT	WATTS LOSS	APPROX. WEIGHT-LBS	TERMINAL BLOCK TORQUE (LB-IND)
KDRA54LC1	208/240	0.5	2.40	7	8	10
KDRA53LC1	208/240	0.75	3.50	12	8	10
KDRA25LC1	208/240	1.0	4.60	11	8	10
KDRA26LC1	208/240	1.5	6.60	18	8	10
KDRA27LC1	208/240	2.0	7.50	21	8	10
KDRA28LC1	208/240	3.0	10.6	29	8	10
KDRA54HC1	208/240	0.5	2.40	14	8	10
KDRA53HC1	208/240	0.75	3.50	16.8	8	10
KDRA25HC1	208/240	1.0	4.60	23.6	8	10
KDRA27HC1	208/240	1.5	6.60	30.6	8	10
KDRA26HC1	208/240	2.0	7.50	30.5	8	10
KDRA28HC1	208/240	3.0	10.6	43.1	8	10

KDRA55LC1	575/600	0.5	0.90	6	8	10
KDRA56LC1	575/600	0.75	1.30	9.3	8	10
KDRA50LC1	575/600	1.0	1.70	12	8	10
KDRA51LC1	575/600	1.5	2.40	19	8	10
KDRA46LC1	575/600	2.0	2.70	22	8	10
KDRA52LC1	575/600	3.0	3.90	23.3	8	10
KDRA47LC1	575/600	5.0	6.10	34.7	8	10
KDRA48LC1	575/600	7.50	9.0	42.9	8	10
KDRA49LC1	575/600	10.0	11.0	43.8	8	10
KDRA55HC1	575/600	0.5	0.90	9	8	10
KDRA52HC1	575/600	0.75	1.30	13	8	10
KDRA50HC1	575/600	1.0	1.70	17	8	10
KDRA51HC1	575/600	1.5	2.40	26	8	10
KDRA43HC1	575/600	2.0	2.70	24	8	10
KDRA44HC1	575/600	3.0	3.90	35	8	10
KDRA45HC1	575/600	5.0	6.10	48	8	10

NEC MOTOR CURRENTS SHOWN IN THE 208/240 VOLT CHART ARE BASED ON HORSE POWERS AT 208 VOLT. 575/600 VOLT CHART USE THE 575 VOLT CURRENT RATING.



TERMINAL BLOCK MARKING

CUSTOMER IS RESPONSIBLE FOR INSTALLATION TO MEET ALL NATIONAL AND LOCAL ELECTRICAL CODES.

NOTE: A1, A2, B1, B2, C1, C2, MARKINGS ON COIL AND TERMINAL BLOCK FOR REFERENCE ONLY.

		TOLERANCES EXCEPT AS NOTED:		TCI 7878 N. 86th STREET MILWAUKEE, WI 53224	
		DECIMAL		KDR (FRAME A) ENCLOSED WIDE RANGE REACTOR	
		.XX ±.03		DRAWN BY DSW DATE 2/25/09 DWG. NO. C KDR-31DG	
		.XXX ±.01		SCALE 1/2	
		FRACTIONAL ± 1/32		APPROVAL	
2604 MARK REF		4/17/09 DSW		SHT. 1 OF 1	
NO REVISION		DATE BY			
		ANGULAR ± 1/2°			