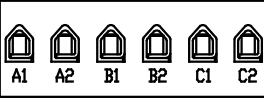


CATALOG NO	VOLTAGE	NEC MOTOR HP	NEC MOTOR CURRENT	WATTS LOSS	APPROX. WEIGHT-LBS	TORQUE (LB-IN)
KDRB2LC1	480	15	21	65	12	20
KDRB1LC1	480	20	27	79	12	20
KDRB2HC1	480	15	21	133	11	20
KDRB1PC1	480	10	14	NOTE 1	11	20

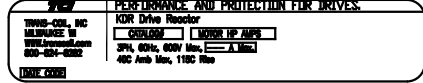
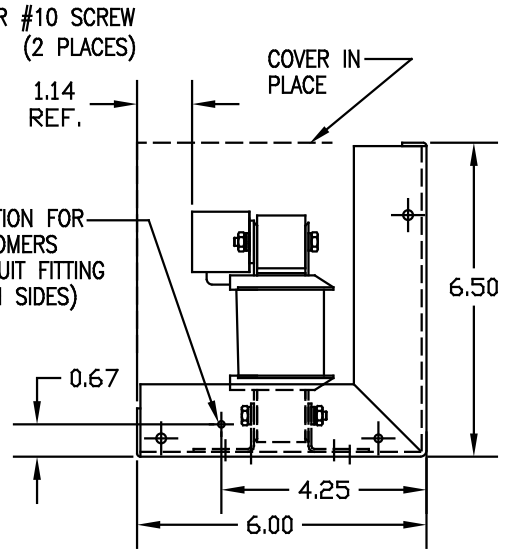
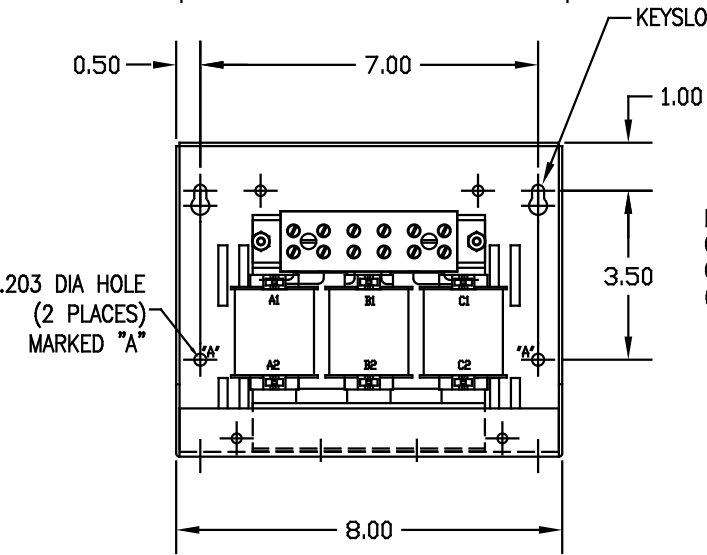
NOTE 1: WATTS LOSS WILL VARY DUE TO FUNDAMENTAL FREQUENCY, CARRIER FREQUENCY AND OTHER SYSTEM CHARACTERISTICS. KDR DRIVE REACTORS COMPLY WITH THE THERMAL AND ALTITUDE STANDARDS SET FORTH BY NEMA ST20-1992..

Block Wire Range: #18 to #4 AWG Solid or Stranded, Copper
Tightening Torque: 20 LB-IN



TERMINAL BLOCK MARKING

NOTE: A1, A2, B1, B2, C1, C2, MARKINGS ON COIL AND TERMINAL BLOCK FOR REFERENCE ONLY.



ENCLOSURE LABEL PLACED ON FRONT COVER.

CUSTOMER IS RESPONSIBLE FOR INSTALLATION TO MEET ALL NATIONAL AND LOCAL ELECTRICAL CODES.

TOLERANCES EXCEPT AS NOTED	
DECIMAL	.XX ± .03 .XXX ± .01
FRACTIONAL	± 1/32
ANGULAR	± 1/2°

TCI 7878 N. 86th STREET
MILWAUKEE, WI 53224

**KDR ASSEMBLY, "B" FRAME
"C1" ENCL., INPUT & OUTPUT**

DRN BY: RJC DATE: 5/29/01 DWG. NO.: KDR-2DG
SCALE: 3/8"=1" APPRVD: B SHT. 1 OF 1

NO	REVISION	DATE	BY
C	2604 MARK REF	4/17/09	DSW
B	2235 REACTOR MTG	09/15/03	DW